

IPHA TT AWARD

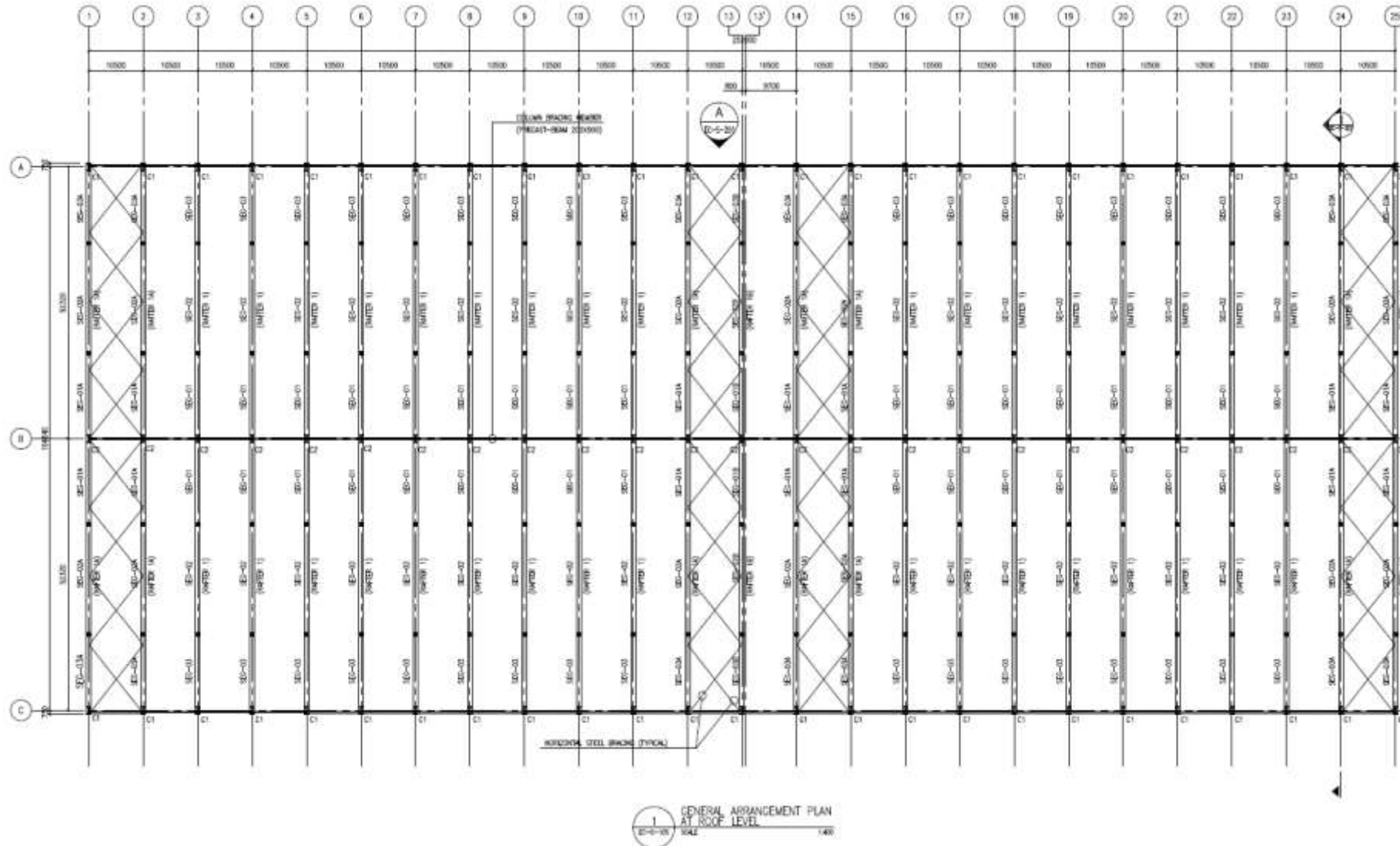


Sharjah Cement Clinker Shed- Hollowcore Retaining Walls

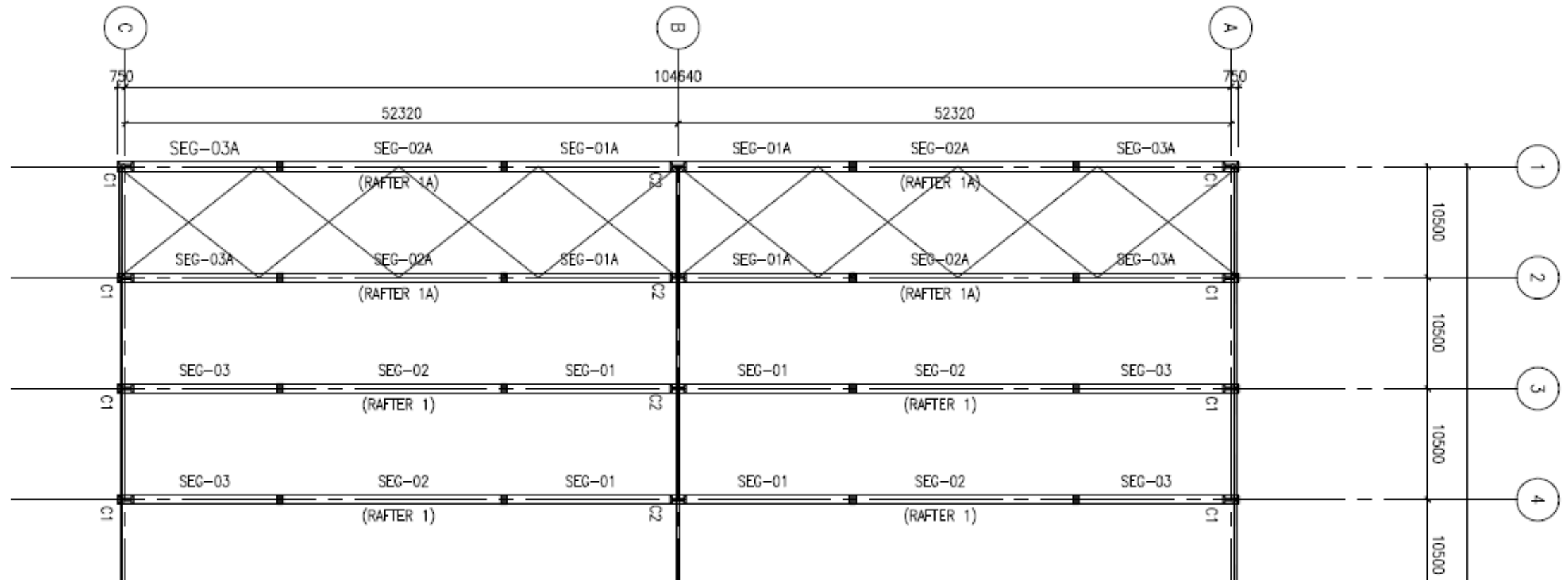
Project Description

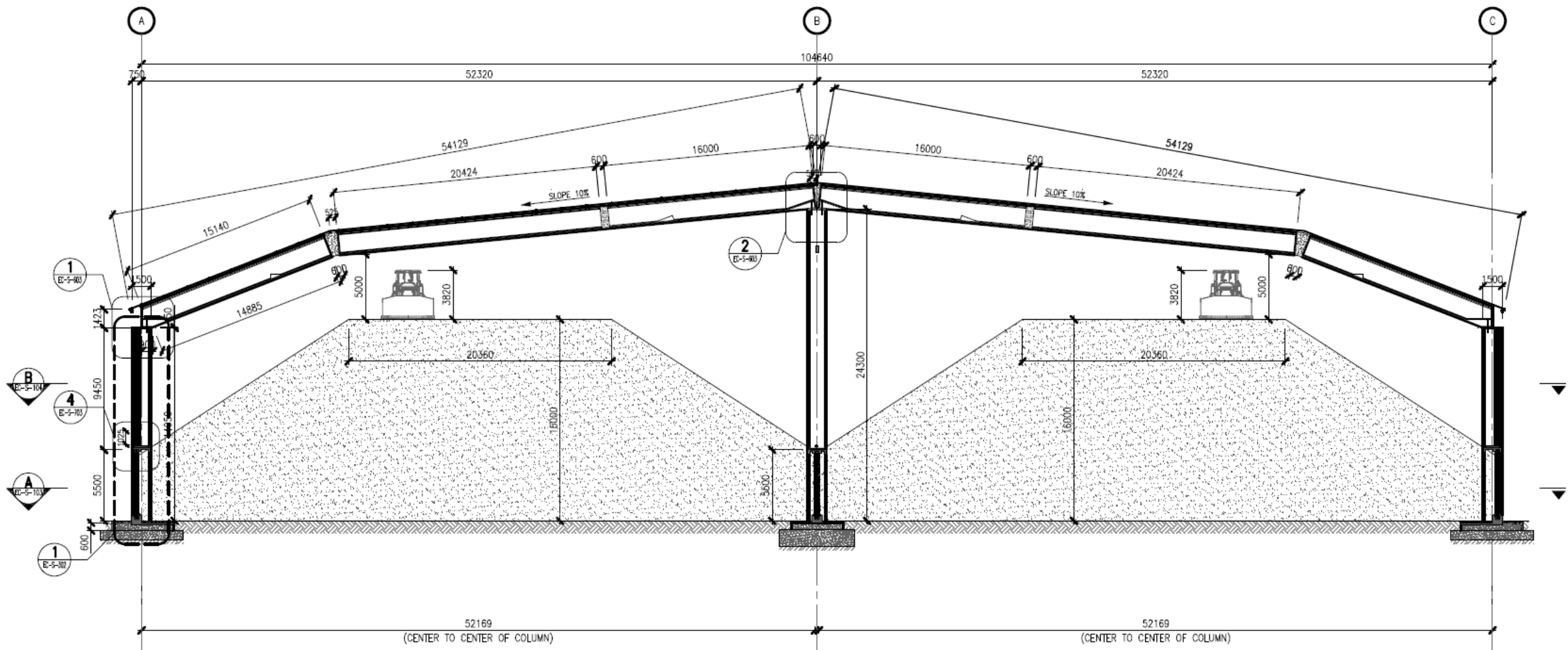
- ▶ Client required covered area of 26000m² for storage of 450000 tons of clinker for cement manufacture
- ▶ Precast option including column, precast post-tensioned beams and hollowcore retaining walls and cladding was decided on

General arrangement



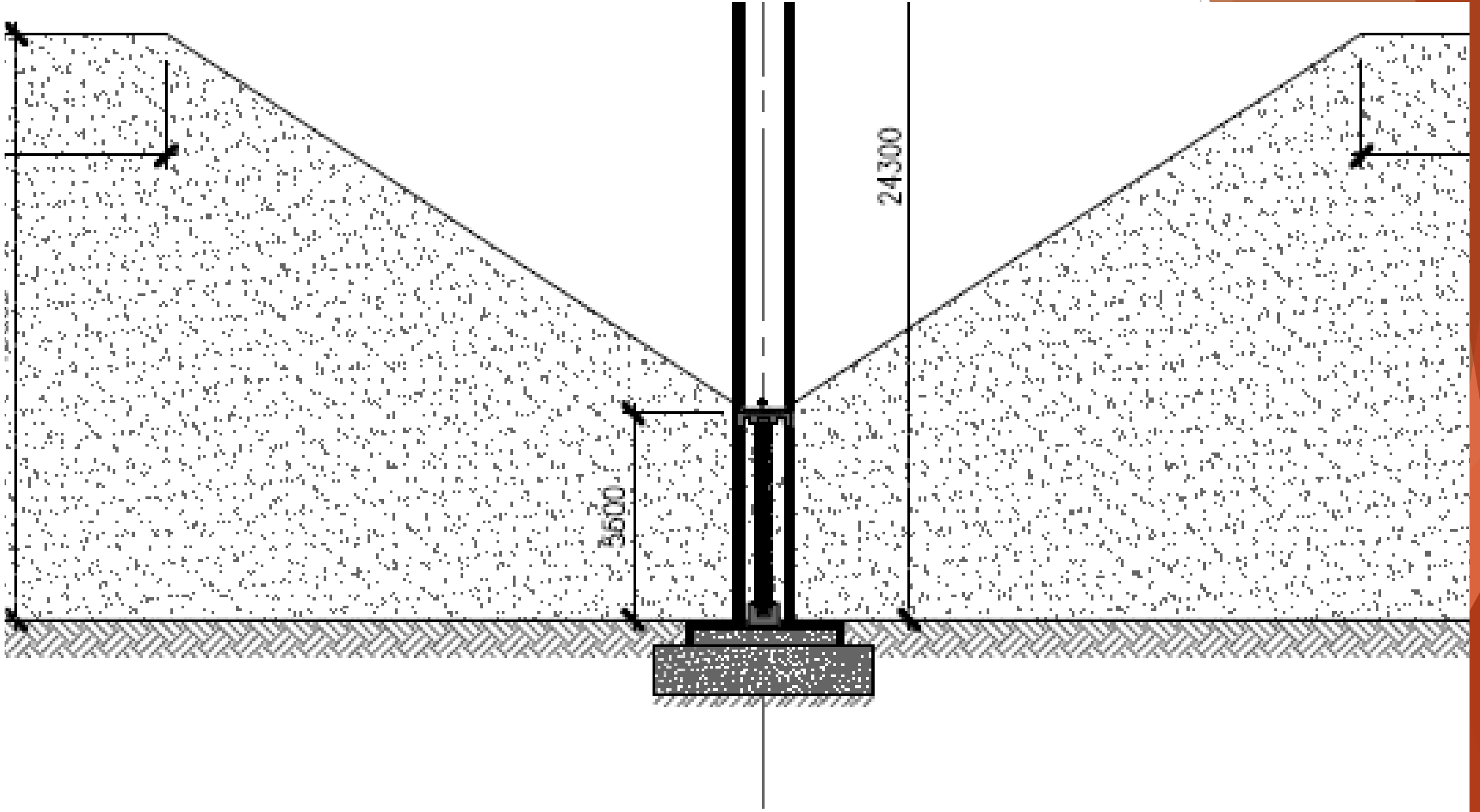
General arrangement



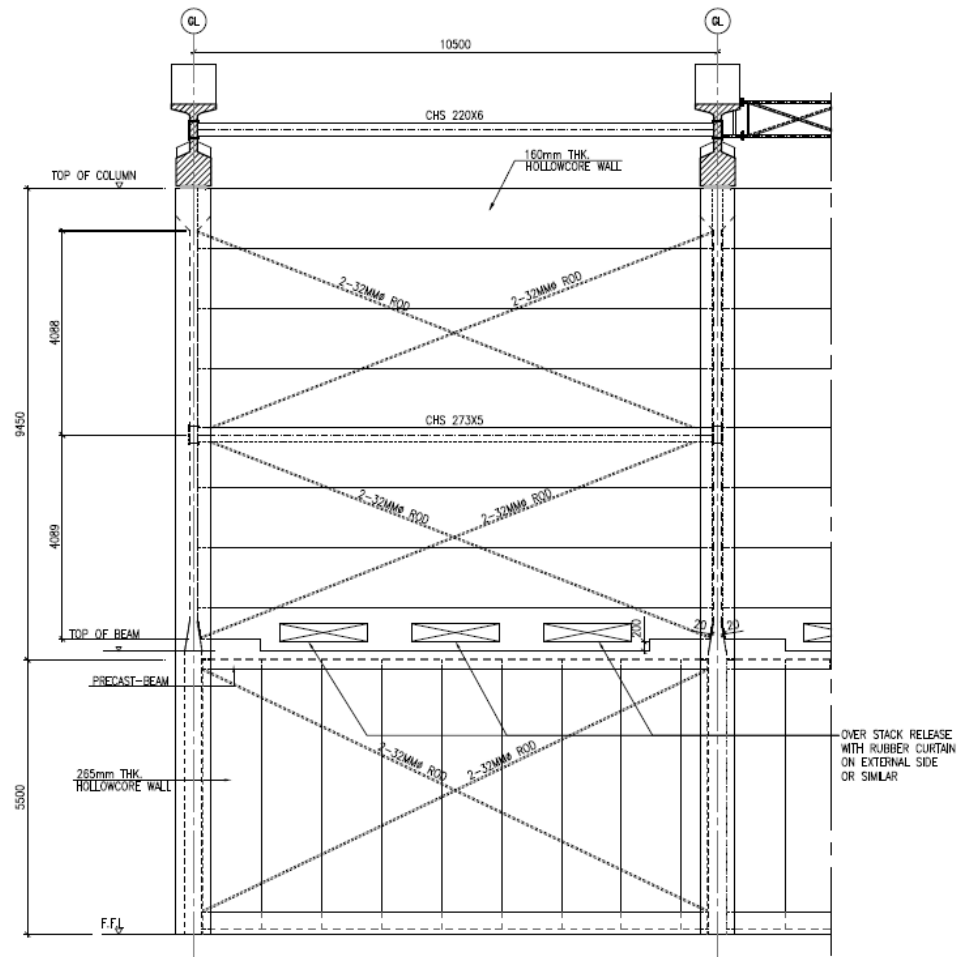


1 CROSS SECTION
 EC-9-301 SCALE 1:200

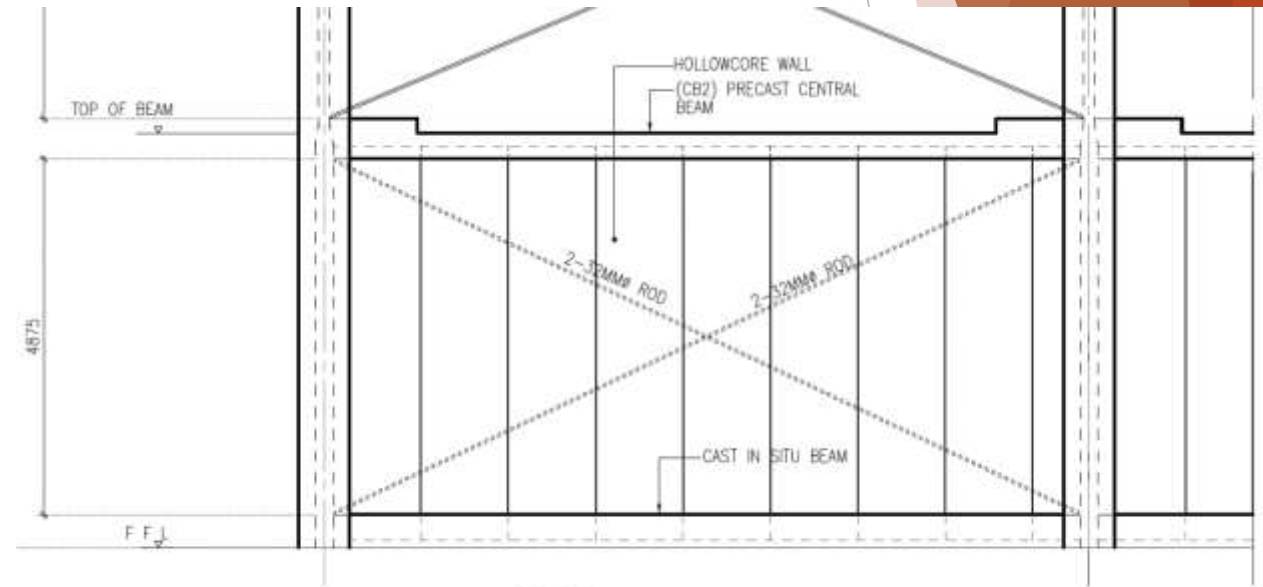
CAPACITY: 230,500 TONS EACH SIDE
TOTAL CAPACITY: 461,000 TONS



Typical sections and elevations

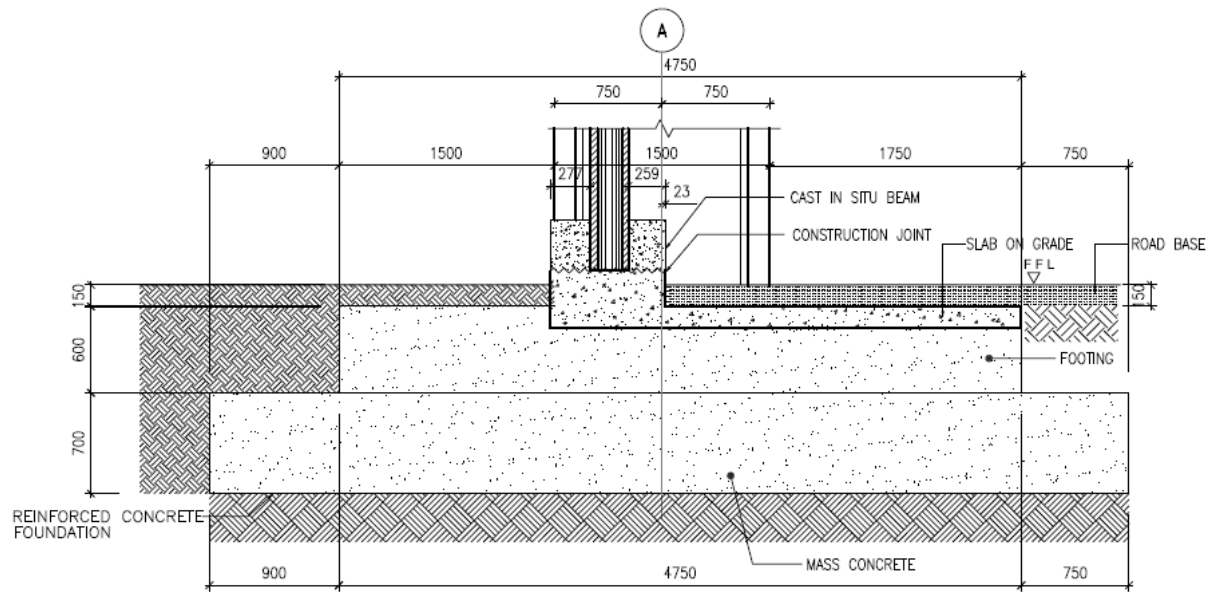


1 EXTERIOR WALL ELEVATION
 EC-S-201/105 SCALE 1:75

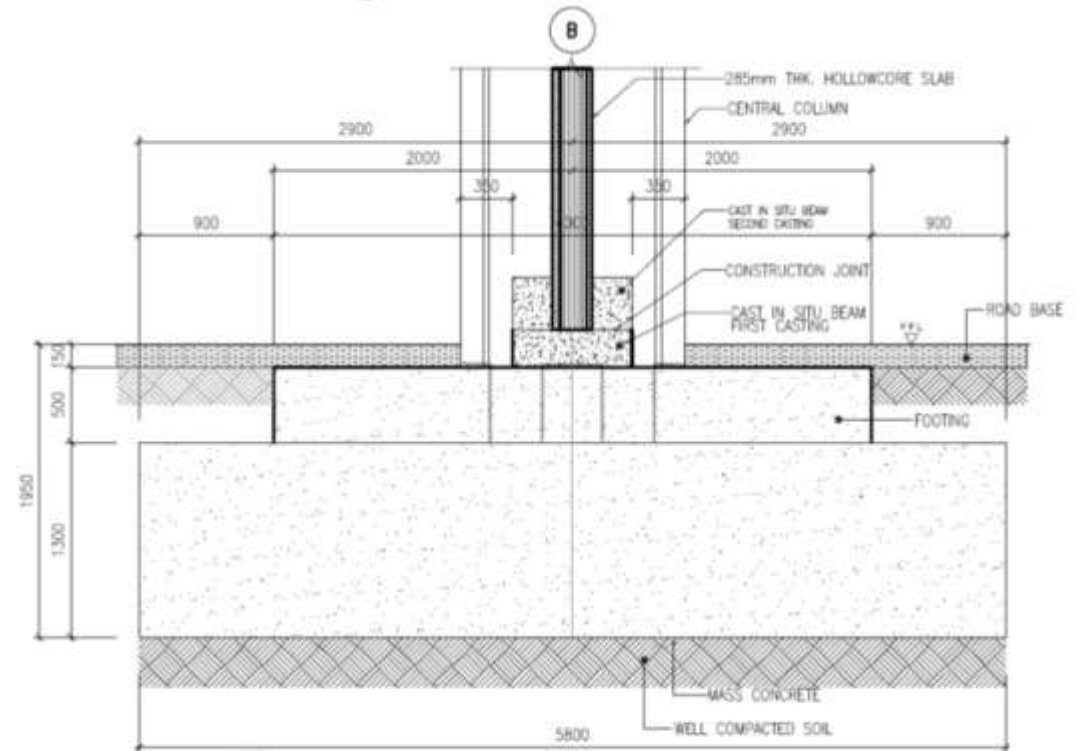


2 CENTRAL WALL ELEVATION
 EC-S-105 SCALE 1:75

Typical sections and elevations



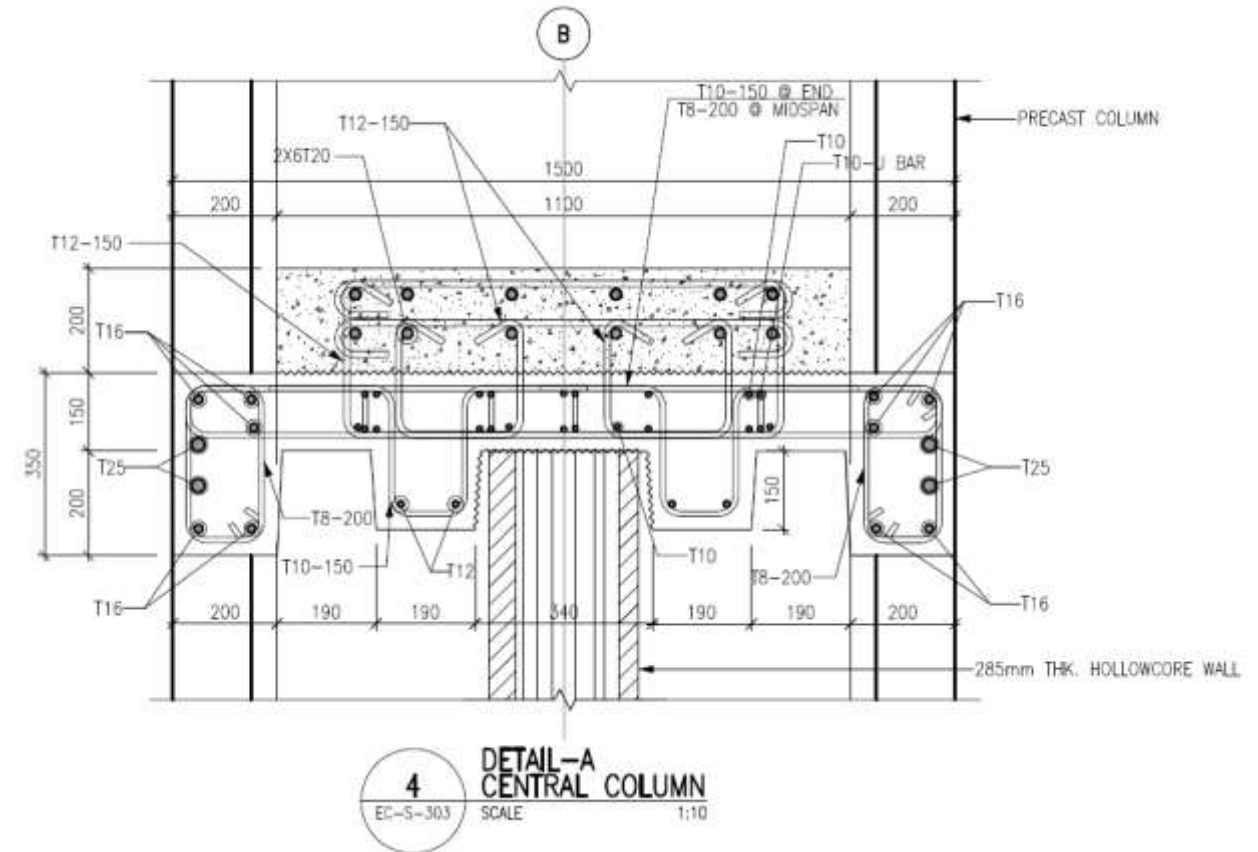
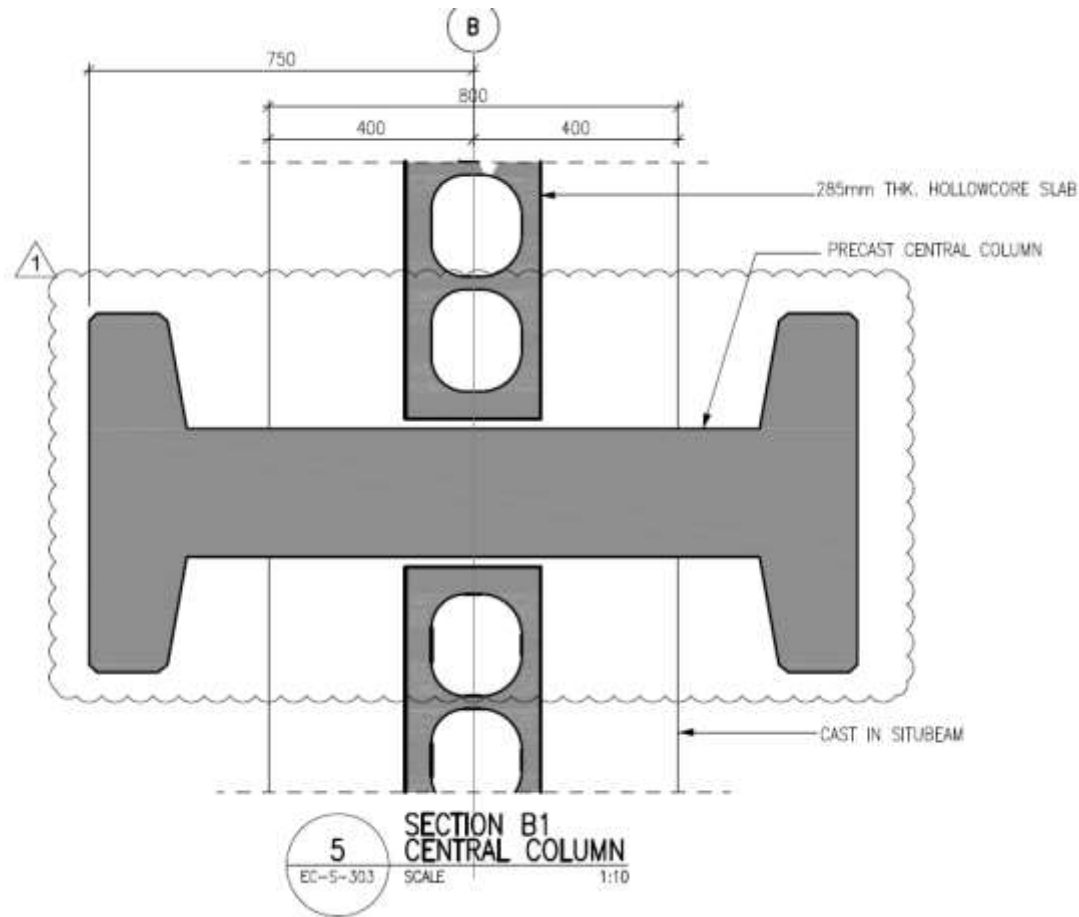
3
EC-S-302
DETAIL-C
EDGE COLUMN
SCALE 1:30



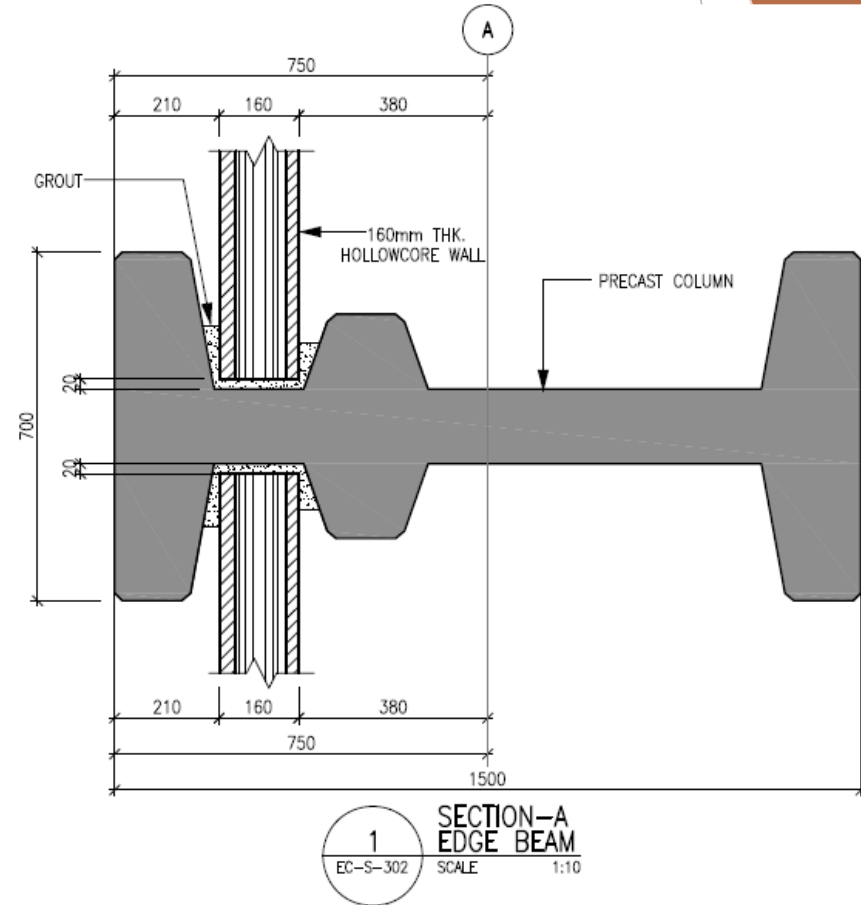
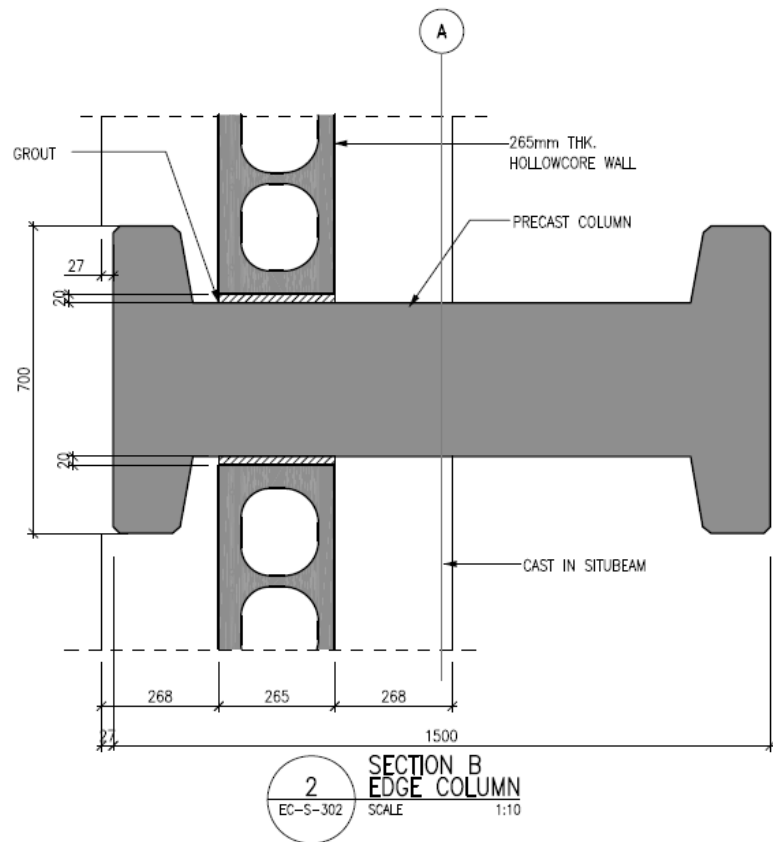
NOTE:
ALL PCC FOUNDATION WILL CAST AT ONE STAGE NO CONSTRUCTION JOINT.

6
EC-S-303
DETAIL-C1
CENTRAL COLUMN
SCALE 1:30

Typical sections and elevations



Typical sections and elevations



Production adjustments



Installation



Installation



Installation



Installation



Installation



Installation



Thank you

The background features a series of overlapping, semi-transparent triangles in various shades of brown and orange, creating a dynamic, abstract geometric pattern on the right side of the slide.