

A large concrete beam is being lifted by a yellow crane at night. The beam is suspended in the air, and the crane's arm is visible on the right. The background is a dark blue sky with some lights from the construction site. The text "Master for demanding projects" is overlaid on the image.

Master for demanding projects

BetoniMestarit

2018

Juha Soilu

# Betonimestarit is part of TMB Group

Strong position around on Baltic Sea, Based on finnish prefab know how!



## FACTORIES

Iisalmi  
Nastola  
Turku  
Parainen  
Haapavesi  
Tartu  
Riika

## OFFICES

Vantaa  
Kuopio

# BM Values



## Customer management

- Additional value
- Target win-win partnership
- Project management !



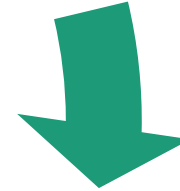
## Profitability

- Skilled personnel
- BM method- know how create competitiveness
- Prefab construction efficiency !
- Industrial performance integrated to skilled prefab project management



## Carbon footprint

- Material optimization
- Minimize material losses
- We are forerunner at circulation economy

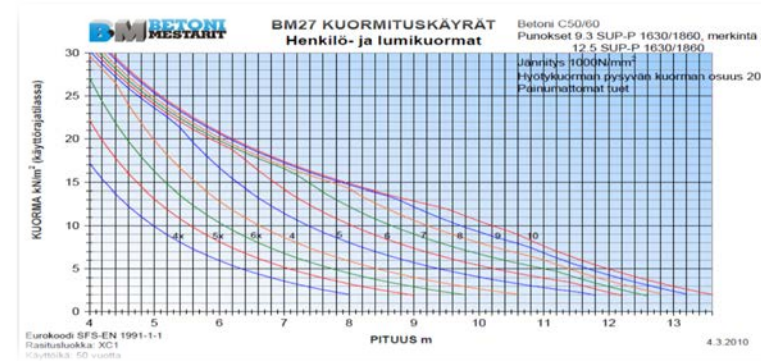
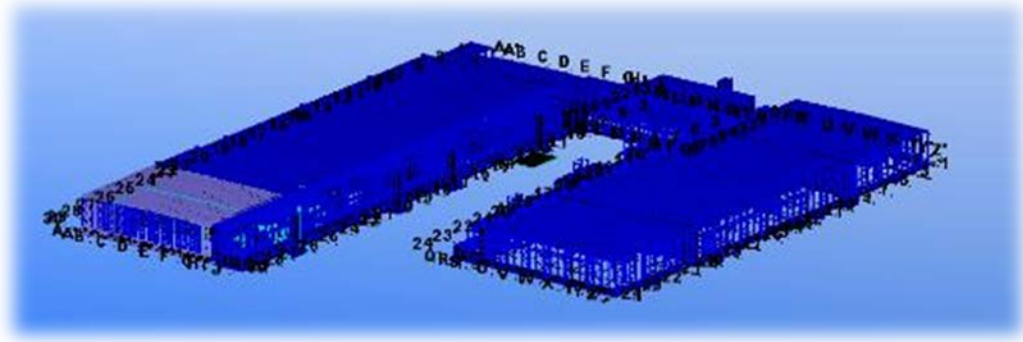


## Safety

- On every day to
- Society responsibility
- BM good employer
- Proper preplanning , good precaution



# Prefab projects know how and resources

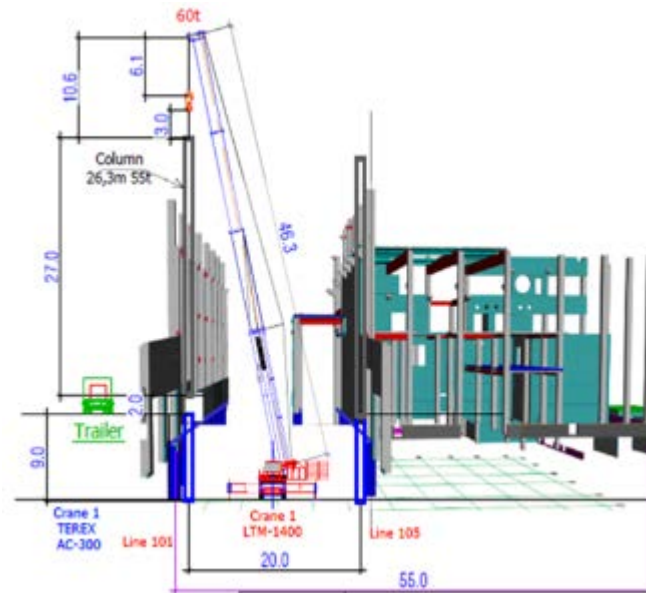


## 1. Building optimization

- BIM in use



## 2. Optimization of products



## 3. Production Capacity

- Working at innerhalls!
- Finnish master for 80 tn products



## 4. Site preparation and mgnt

## 5. Certainty Supply !

# BM + TMB GROUP

$$1 + 1 > 2$$



## ANNUAL PRODUCTION CAPACITY

SLABS (HCS, thin shell slabs)	600 000 m <sup>2</sup> - 240 000 tn
TT SLABS	27 000 m <sup>2</sup> - 30 000 tn
BEAMS AND COLUMNS	90 000 tn
WALLS (SW, Soid)	440 000 m <sup>2</sup> - 200 000 tn

Total ca. 560 000 tn

7 factories, Turnover ca. 125 M€

# Facade knowledge



# Active – Gruvön Mill, Gruvön Mill, Next Generation project



# BM Industrial references

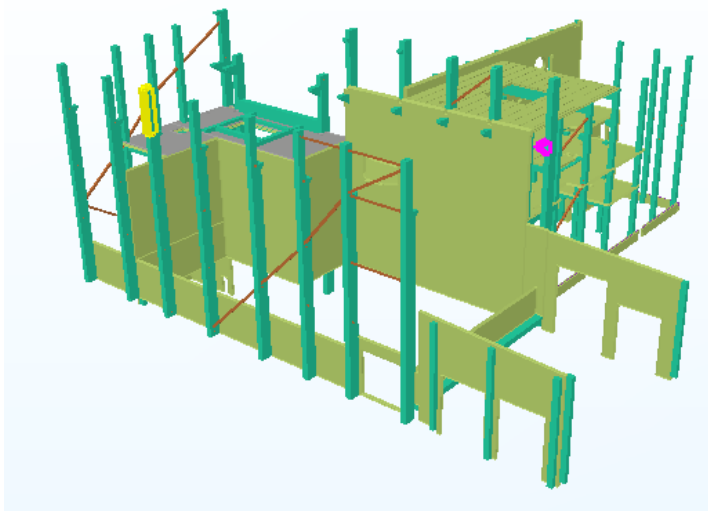


**FACTORIES AND POWER PLANTS**

**LKAB Kiiruna**

**Vantaa Energy Plant**

**Boden Energi P 18**





# Logistics references

LOGISTISC, S GROUP 2014-2016

Built up by using BM concrete elements

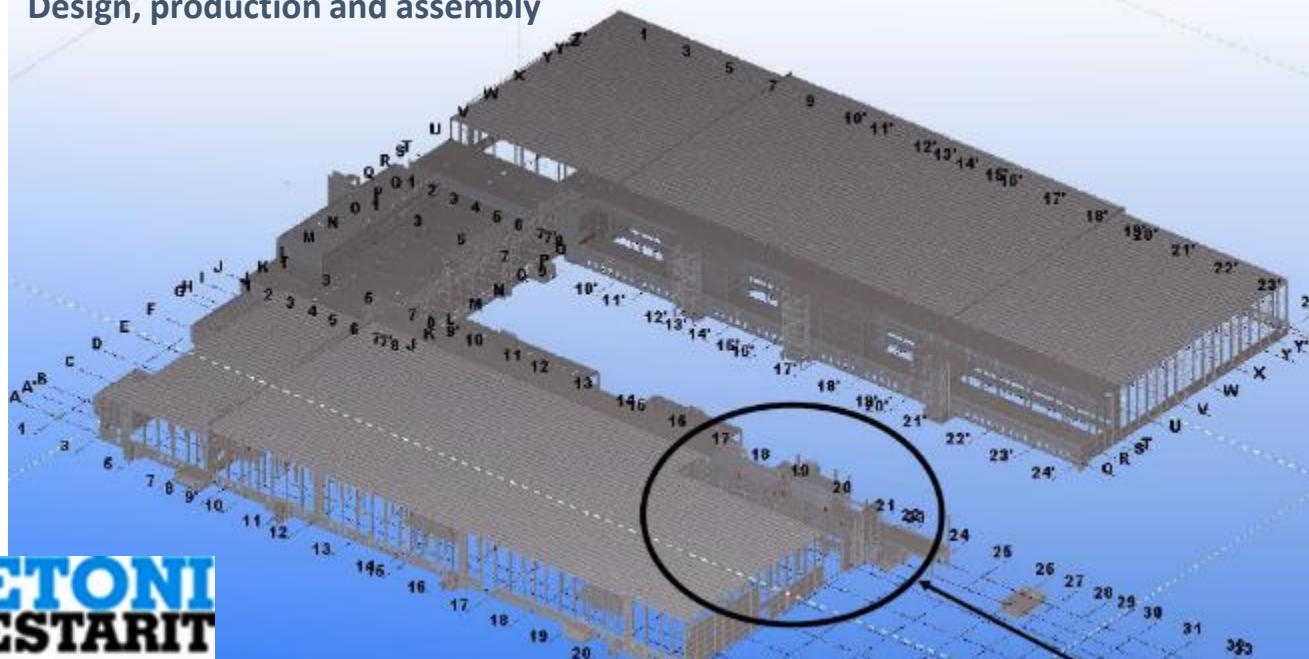
Trade value 40 Meur

Production 120 000 t

Floor area 190.000 sqm ( 19 hec)



Design, production and assembly



# Stockholm-arena 2010-2012

Trade value      40 MEUR  
Production      80 000 tn  
For                35-40.000 people

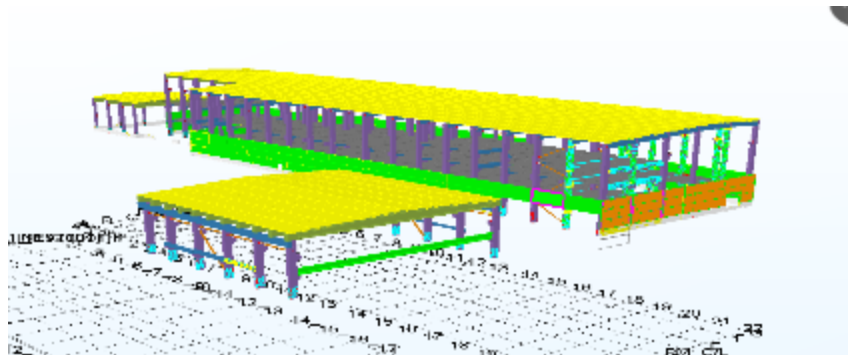
Scope;

Prefab Design, Production  
and prefab erection



<http://www.stockholmsarenan.se/galleri/webbkamera/>

# BM Forest Industrial reference – BillerudKorsnäs Skärblacka 2016-2017



# Boden Energi P18, North of Sweden



# Residential ones



# Contacts

## Betonimestarit Oy

Mr. Juha Soilu:

- Gms: +358 41 5152 452
- [juha.soilu@betonimestarit.fi](mailto:juha.soilu@betonimestarit.fi)



For customer profitable business  
baseline study



Video; [http://www.betonimestarit.fi/dvd\\_2012](http://www.betonimestarit.fi/dvd_2012)



Kiitos!  
Thank you !  
Tack !