

IPHA Technical Seminar 2015

October 21-22, Malmö - Sweden

BIM in the Precast Concrete Industry



Susanne Schachinger
Patrick Tops

Precast Software Engineering

IPHA
INTERNATIONAL PRESTRESSED
HOLLOWCORE ASSOCIATION

in cooperation with
StruSoft



**SOFTWARE & SERVICES
FOR INDUSTRIALISED CONSTRUCTION**

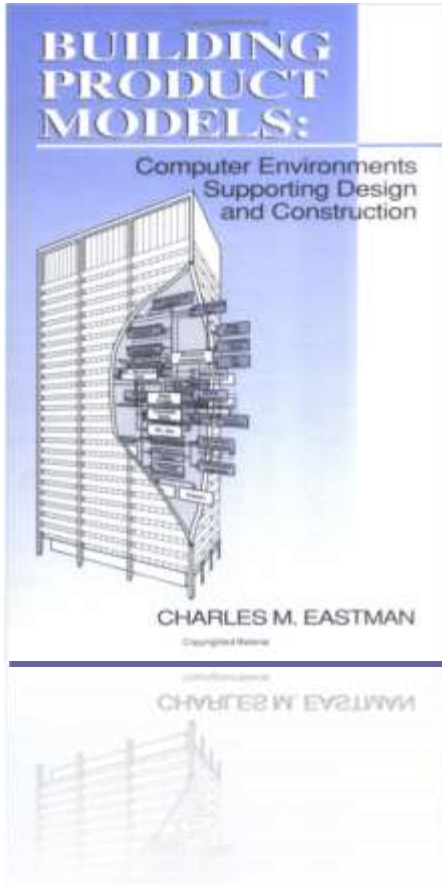
- **BIM**
 - What is BIM - what is BIM not
 - Potential
 - OpenBIM @ Nemetschek Group

- **BIM in the Precast Industry / Past & Present**

- **Selected Key Factors**
 - Interoperability
 - Large Project Handling
 - Integration Services
 - Online Information - mTIM

- **Integrated Planning**

BIM: History



Building Product Model

Eastman used the term „building product model“ in his papers and books since the late 1970s.

A building product model is basically an information or data model.

Eastman C., *Building Product Models: Computer Environments Supporting Design and Construction*, CRC Press, Boca Raton FL, (1999).

BIM: A Definition

Building Information Modeling (BIM) is a digital representation of physical and functional characteristics of a facility. A BIM is a shared knowledge resource for information about a facility forming a reliable basis for decisions during its life-cycle; defined as existing from earliest conception to demolition.^[17]

US National Building Information Model Standard Project Committee





Robert Green
CAD management expert, trainer and
consultant

What's the BIM Deal?
Cadalyt, August 26, 2009

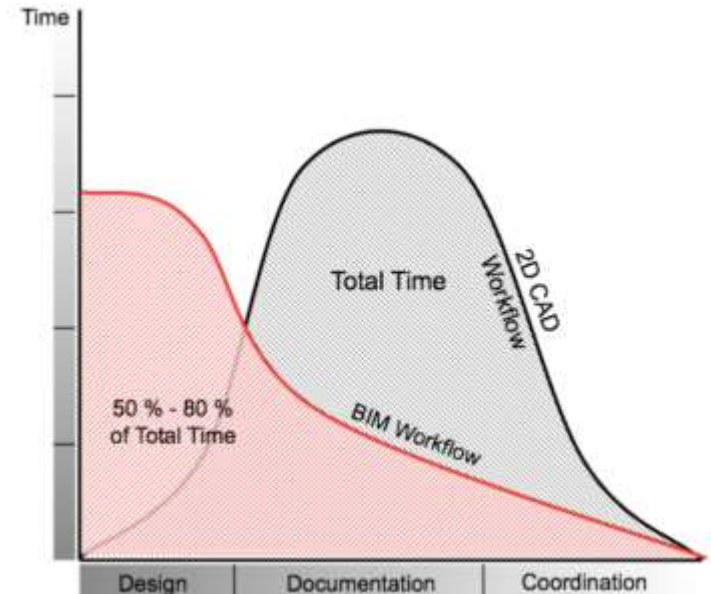
What BIM Is Not

- BIM isn't a software or software upgrade
- BIM isn't something you install over the weekend
- BIM doesn't design buildings by itself
- BIM doesn't make architects or engineers obsolete
- BIM tools don't install and manage themselves
- BIM tools don't have a "magic button" that automates implementation

What BIM Requires

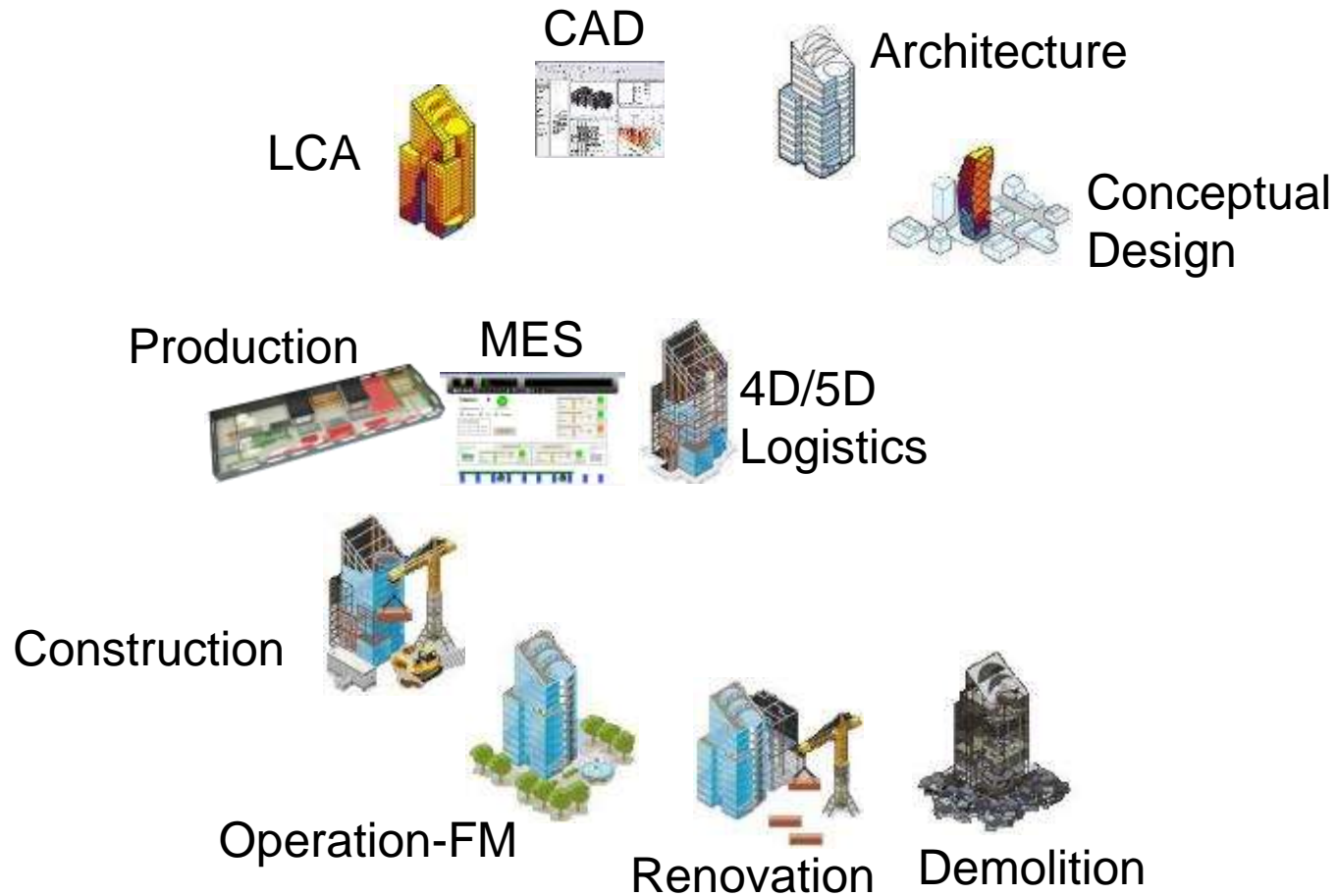
- User training
- Active management
- A file format strategy
- New attitudes / Methodology

- Improved **visualization**
- Improved **productivity** due to easy retrieval of information
- Increased **coordination** of construction documents
- **Embedding and linking of vital information** such as vendors for specific materials, location of details and quantities required for estimation and tendering
- Increased **speed** of delivery
- **Reduced costs**



Source: www.graphisoft.com

BIM: Lifecycle



OPEN BIM™

- Initiative by leading manufacturers of construction software
- Target: Implementation of Open BIM standards (open, manufacturer-independent standard) in the construction industry
- Method that facilitates smooth and efficient design, construction and operation of buildings by means of integrated information processing and with open standards
- IFC is of central importance



- **Complexity:** Projects - Products
- **Time:** Planning during construction process
- Increasing (production) **capacity** coupled with increased architectural and structural requirements
- How does **information** come *lossless* from design to operations scheduling, to production and to assembly?

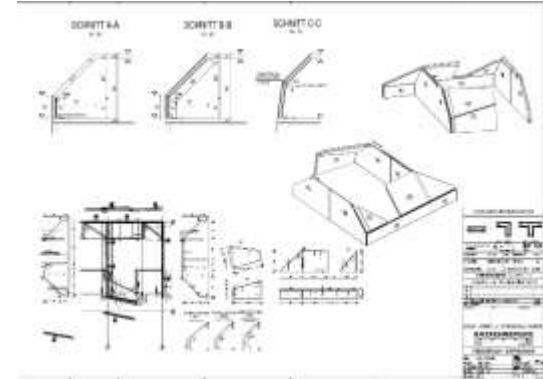
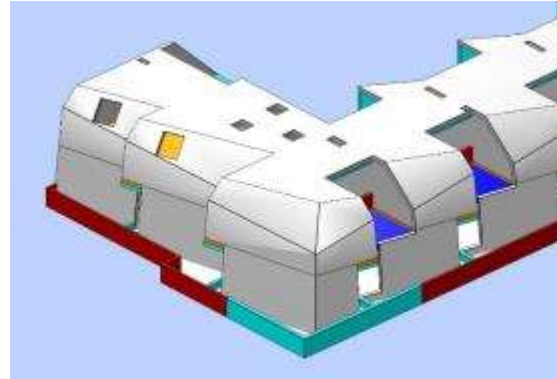


Project Casa Cascada

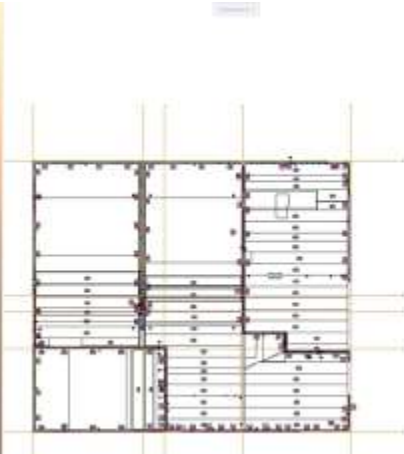
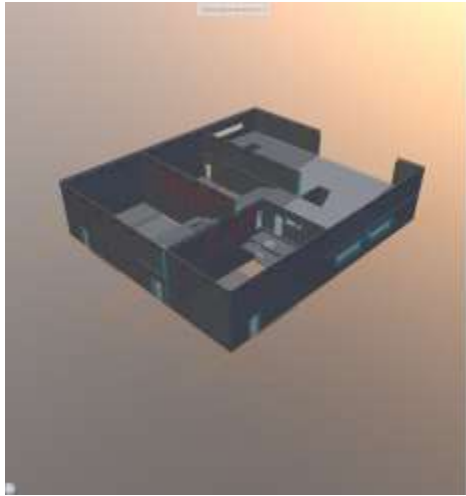
2005

From 2D to 3D

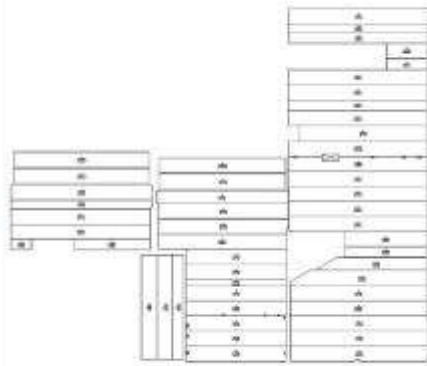
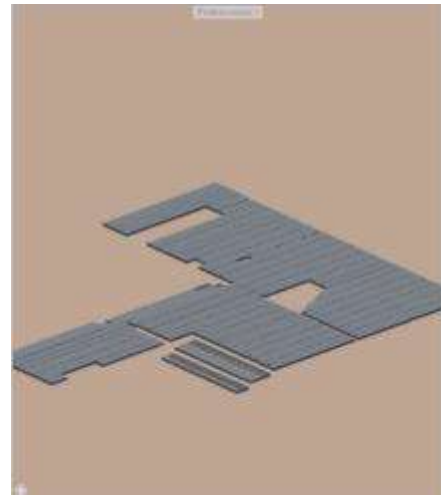
Vienna 2005/2006



BIM Coordination with IFC model exchange



 nipa engineering



 BRULS PREFAB-BETON

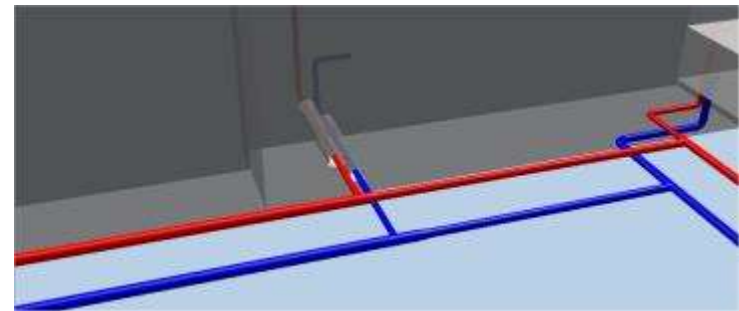
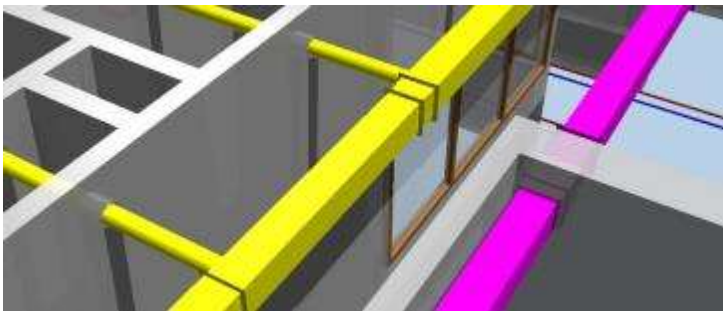
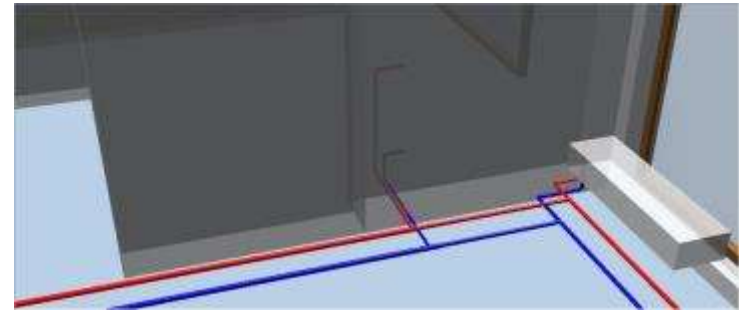
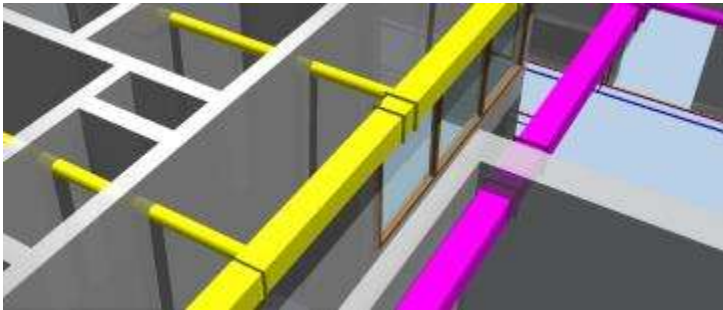
- Data is transmitted from a *Sender* to a *Receiver*
- *Translation* is required
- *Common standards and settings*
- **Coordination** is a key success factor



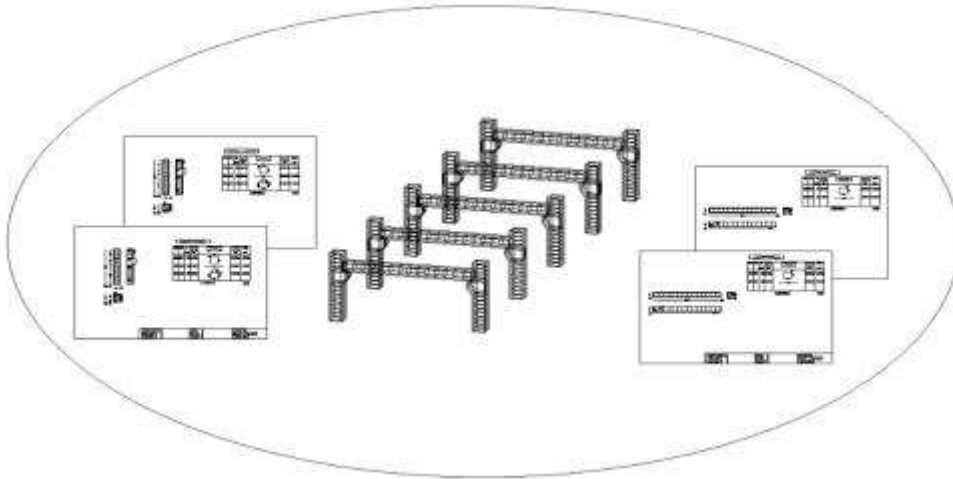
Allplan



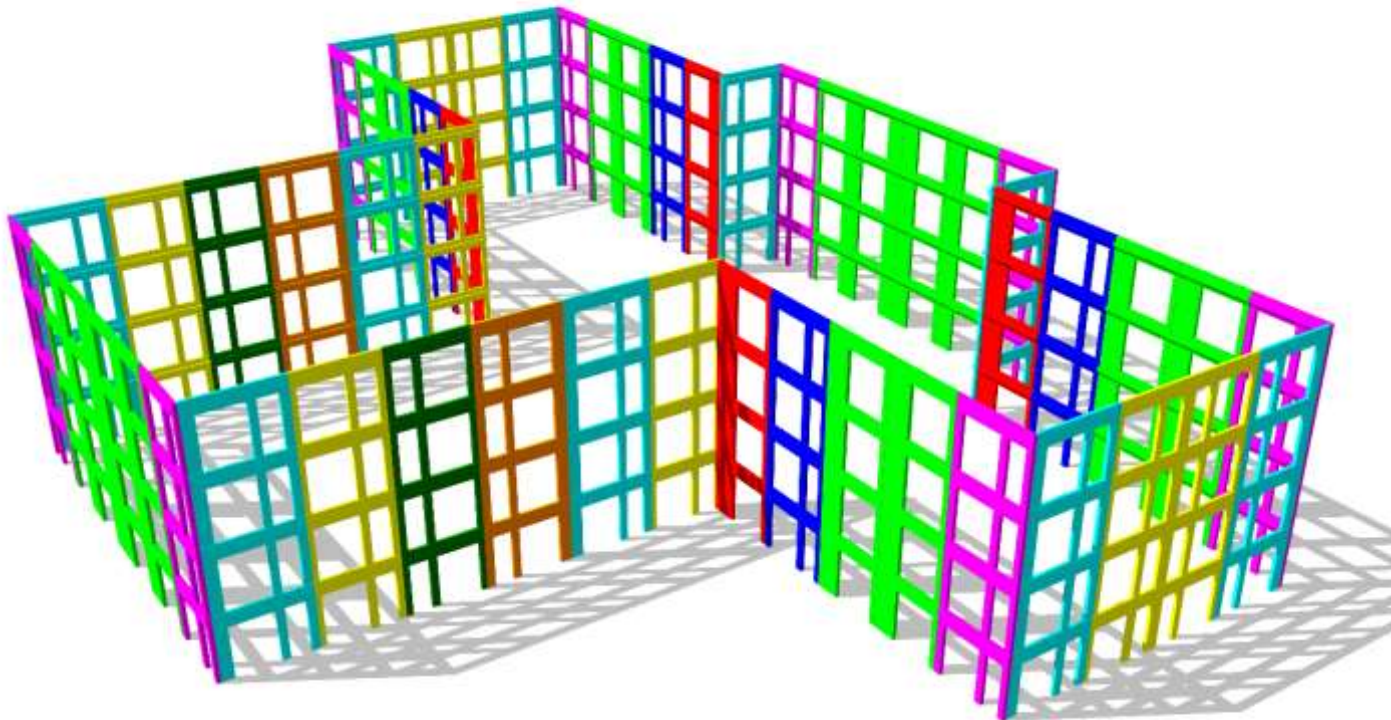
- Integration of the results of HVAC planning into the precast model
- Automatic recognition and placing of openings

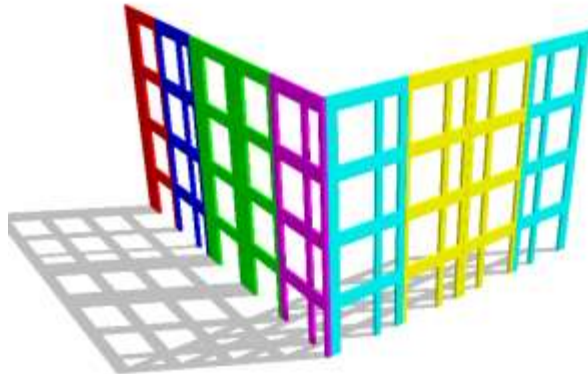


- Project size
- Number of elements
- Level of information

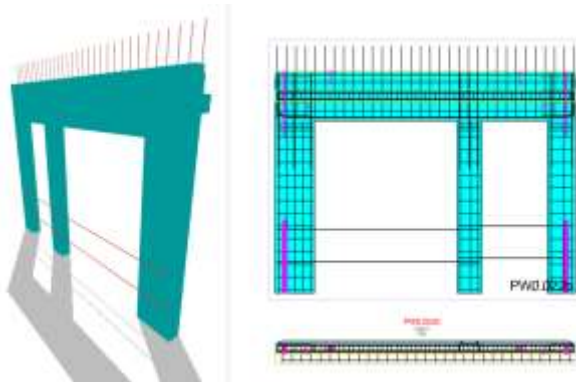


- Identical precast elements
- Several floors



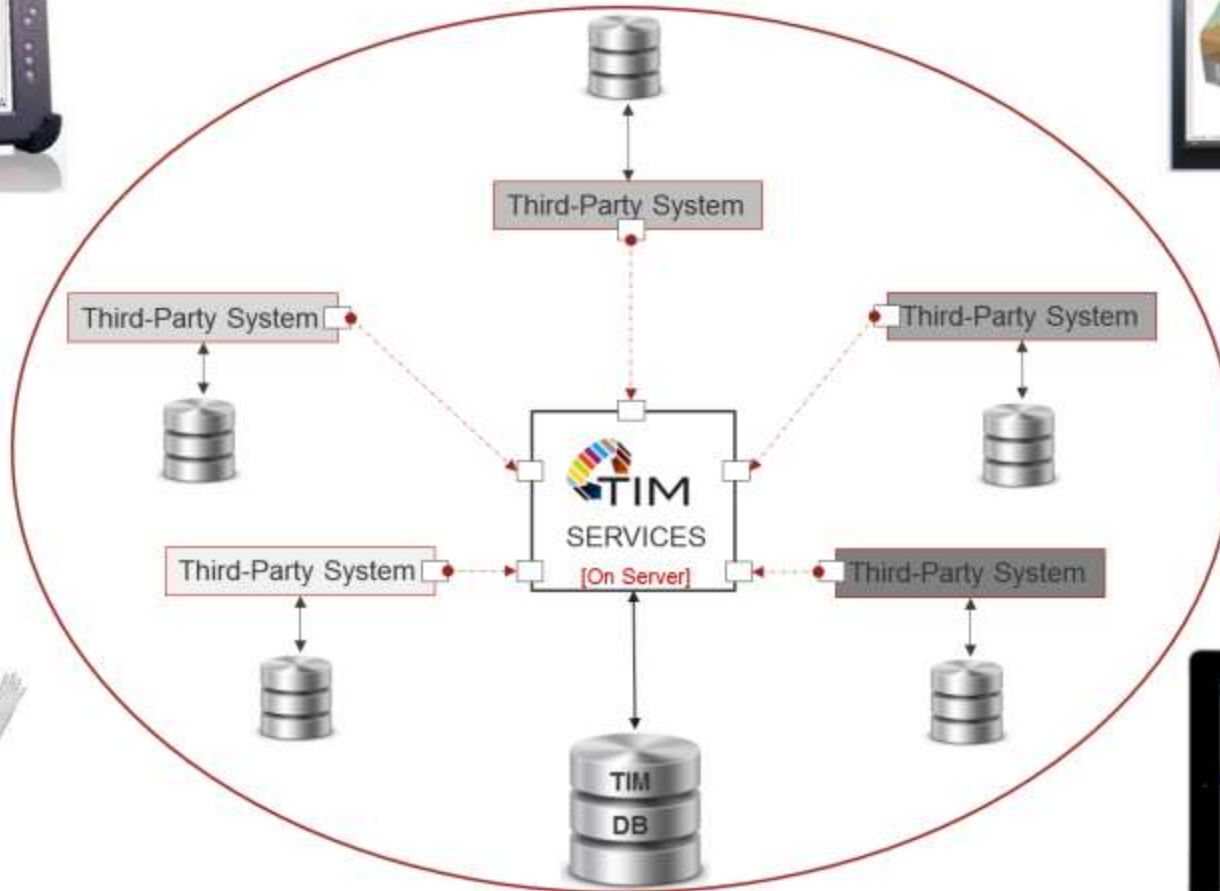


- Different floors on different drawing files
- Identical precast elements
- Only few data for the precast elements in the model
- Geometry, Attributes



- One Precast on one Detail drawing file
- One Detail for identical precast elements
- Synchronised connection of Model and Detail
- Elementplan

Integration Services

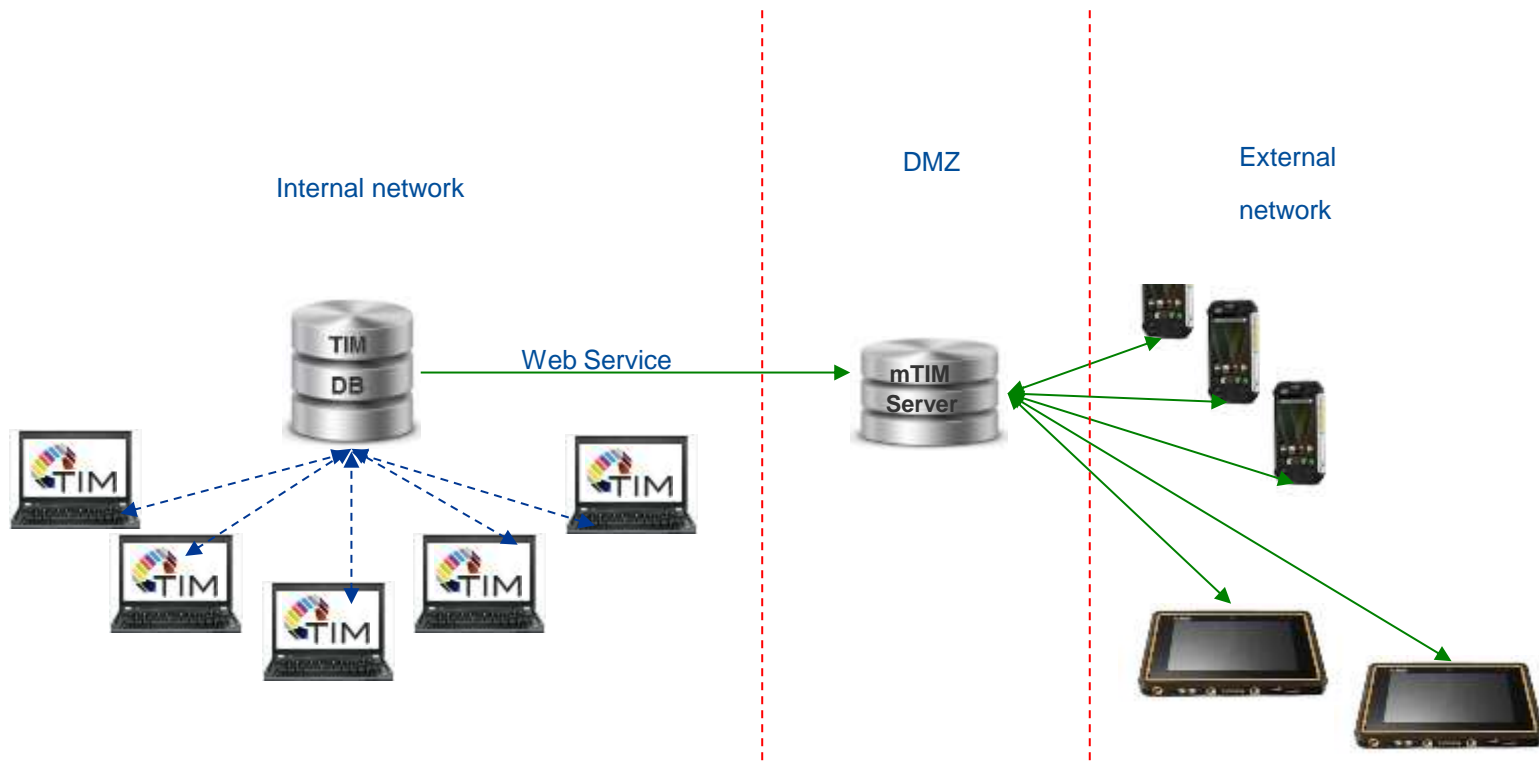


- Assembly control
- Online information on phone/tablet instead of paper reports

Handwritten construction report form from OBERNDORFER. The form includes a header with 'MONTAGEBERICHT' and 'OBERNDORFER'. The main content is a grid with handwritten entries. The top row contains 'Schneckenwelle' and 'Heissl. P. Schweißl. Gerüst'. Below this, there are numerical values: '8.4', '630', '170', '95', '95', '95', and '28'. The bottom section contains the text 'Kran umstellen / ca 50 Schrägstelzer einsammeln /'. The form is signed 'Reisel' and dated '02.05.17'.



Advertisement for the CAT Tough Phone. The phone is shown with a rugged design and a screen displaying a construction site. The text on the right reads: **A TOUGH PHONE BUILT FOR A TOUGH JOB**. The phone's screen also shows the TIM logo.



THINK FUTURE!

PRECAST SOFTWARE
engineering
A NEMETSCHEK COMPANY

“As for the future, your task is not to foresee it, but to enable it...”

Antoine de Saint-Exupéry

French Pilot and Writer (1900-1944)

