



INTERNATIONAL PRESTRESSED
HOLLOWCORE ASSOCIATION

Nemetschek Engineering



Bernhard Leitner



**SOFTWARE & SERVICES
FOR INDUSTRIALISED CONSTRUCTION**

The Nemetschek Group

Founded in 1963 ► more than 50 years in business

1,500,000 customers worldwide

Presence in 142 countries, 13 international subsidiaries

>1150 employees worldwide

3 European, 1 American development centers

Sales Revenues 2013: 200 million €

Number 1 in Europe in the CAE market,
listed on Frankfurt stock exchange



Headquarter Nemetschek AG
in Munich



Precast Software Engineering

- > 25 years of experience in precast
- 100% subsidiary of Nemetschek AG
- Based in Salzburg, Austria
- Our team – experts in precast
 - ✓ Development
 - ✓ Support
 - ✓ Commercial department / worldwide



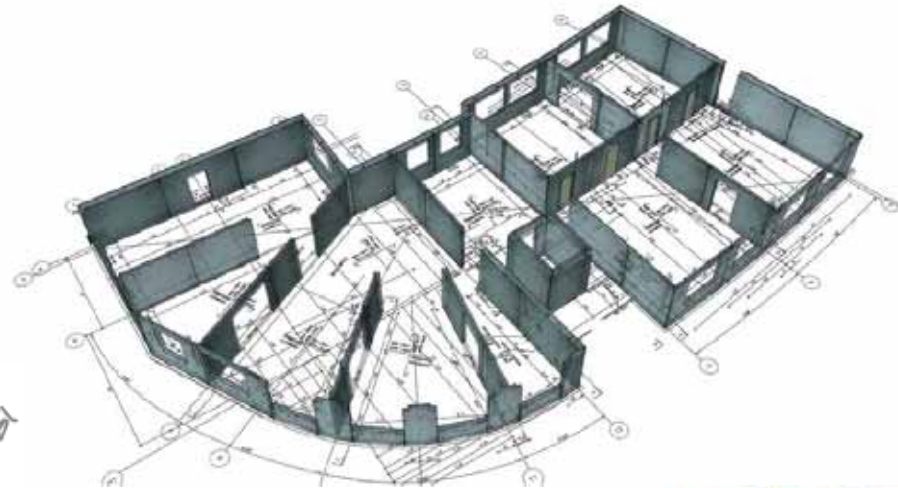
Industry Solution



SANY



Solutions



✓ Think Complete. Care for Detail.

✓ Click & Know

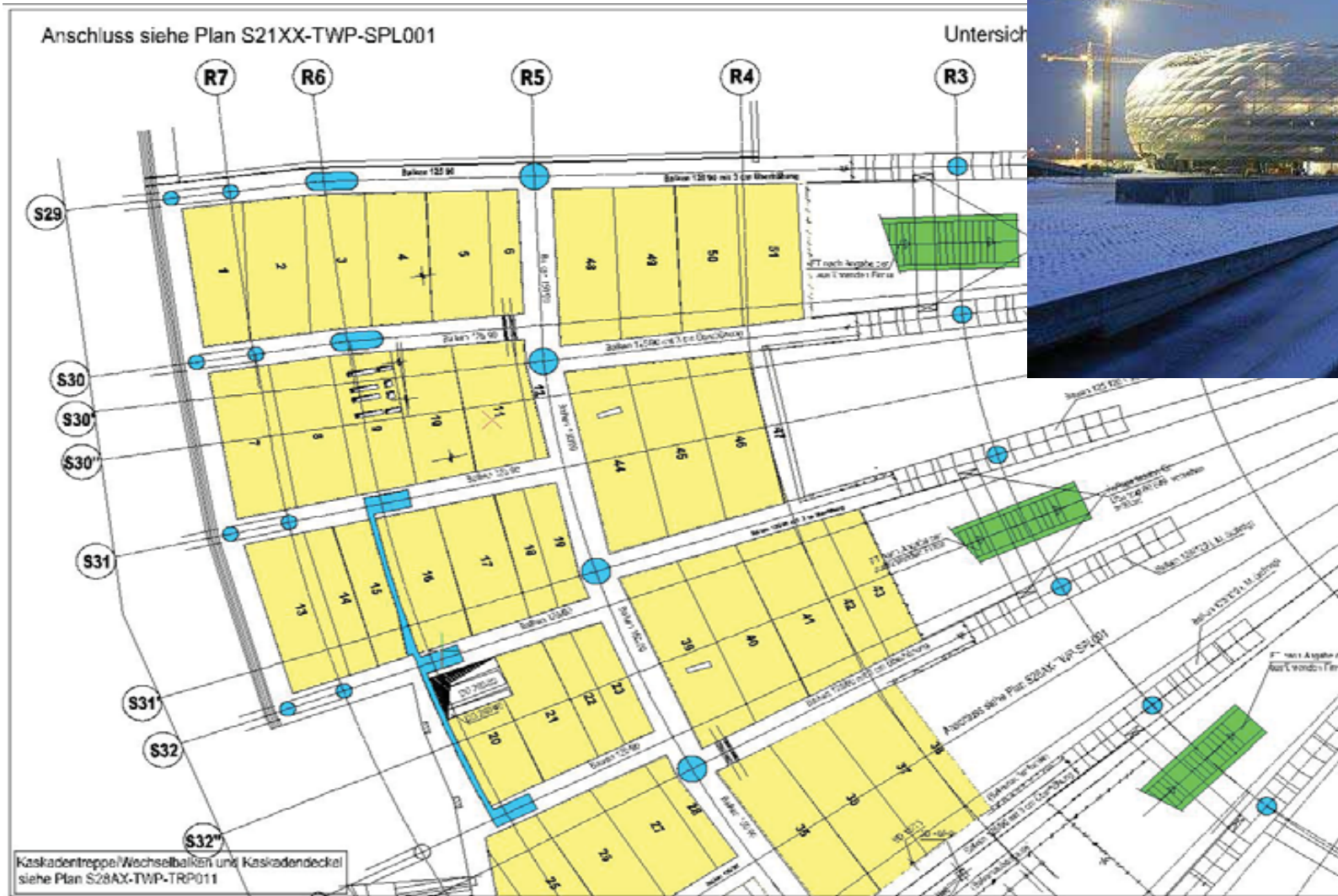


Nemetschek Clients



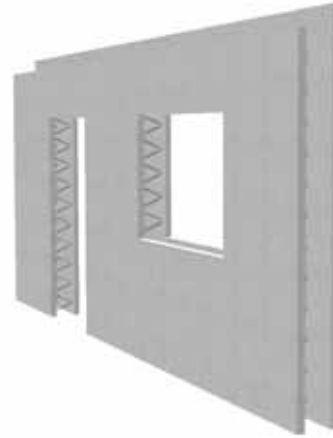
*Real Estate development – mixed use office and shopping
Affordable Housing solutions
Broad Group- Chang Sha*

Allianz Arena / München

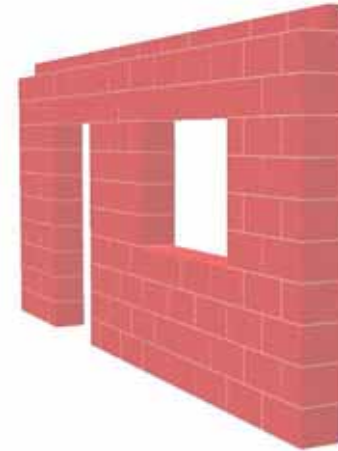




Solid Wall



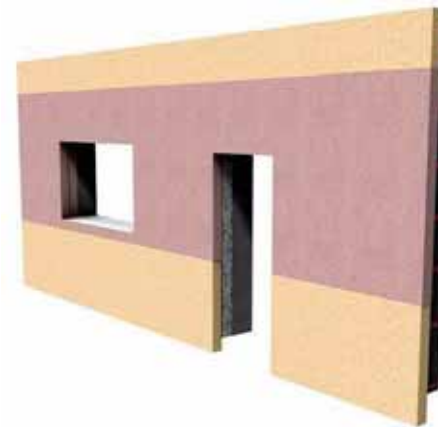
Doublewall



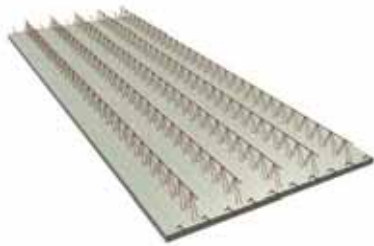
Brick Wall



Core Insulated Wall



Sandwich Panel



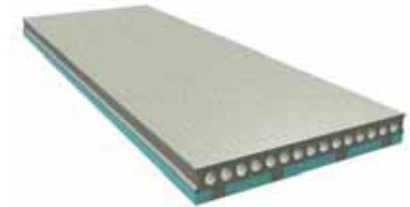
Girder Slab



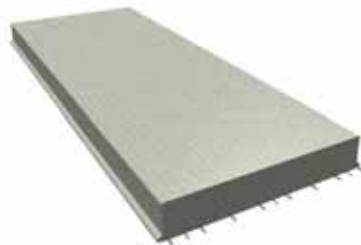
Girder Slab with
Fill



Hollow Core –
Prestressed Hollow Core



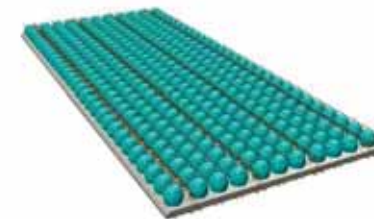
Hollow Core with Insulation



Solid Slab



TT- Plate



System Bubble /Cobiax



Brick Floor



Brick Floor with Fill



Solid Brick Floor



Brick Floor

Customers

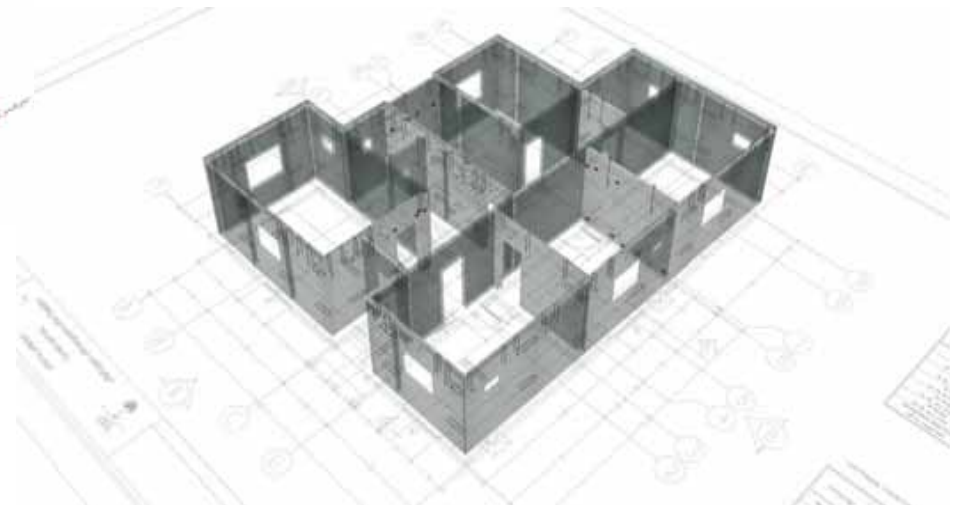
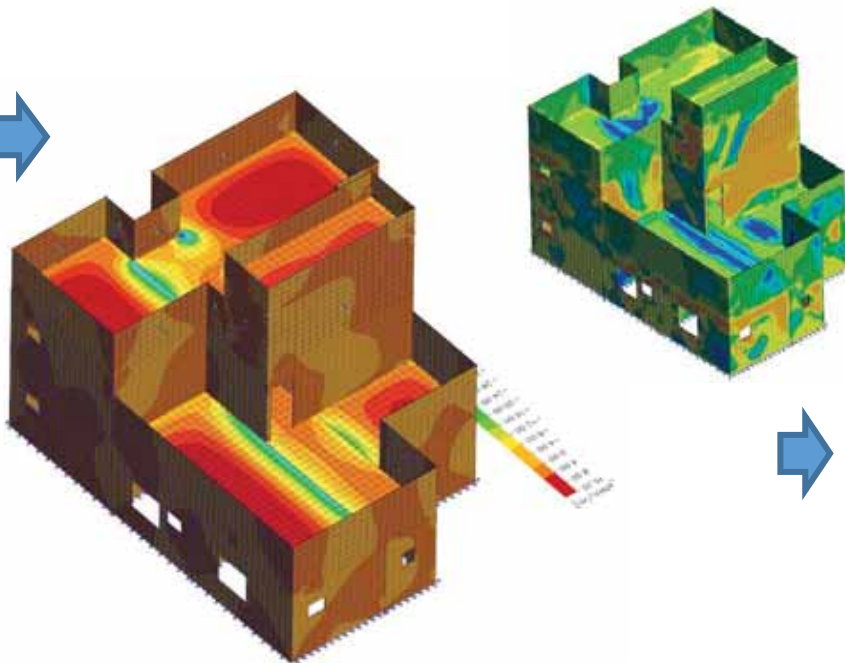
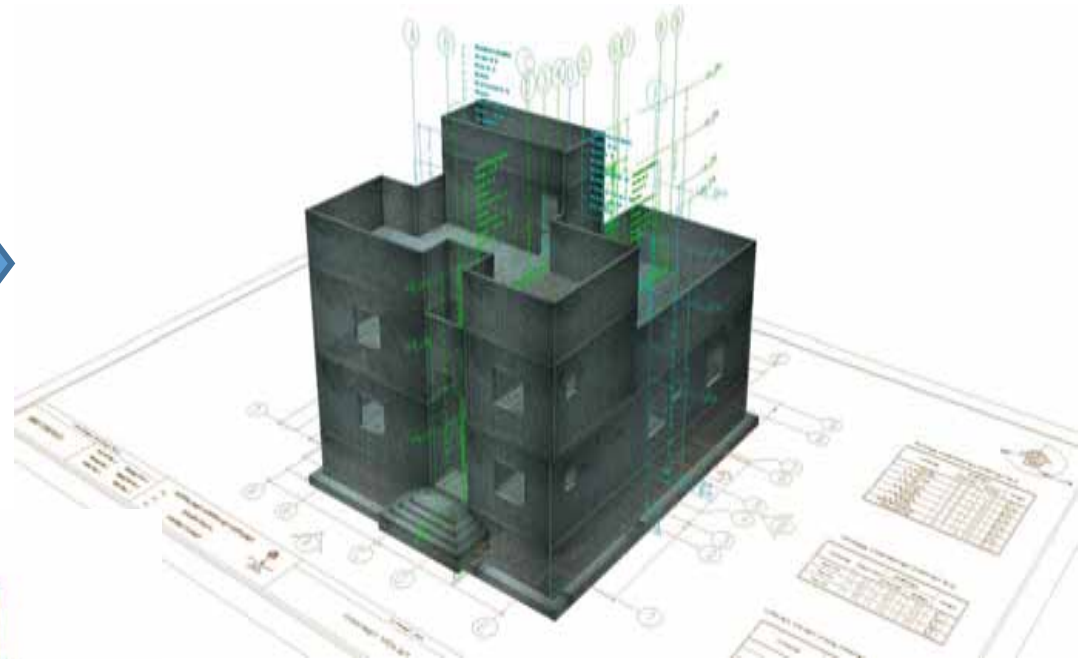
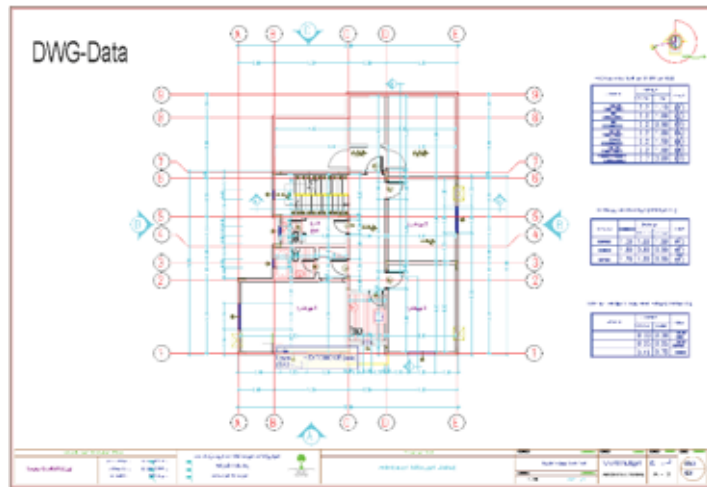
- > 800 customers worldwide
- > 3,800 workstations
- Overall precast production > 260 million m² per year
- > 160 million cubic tonnes



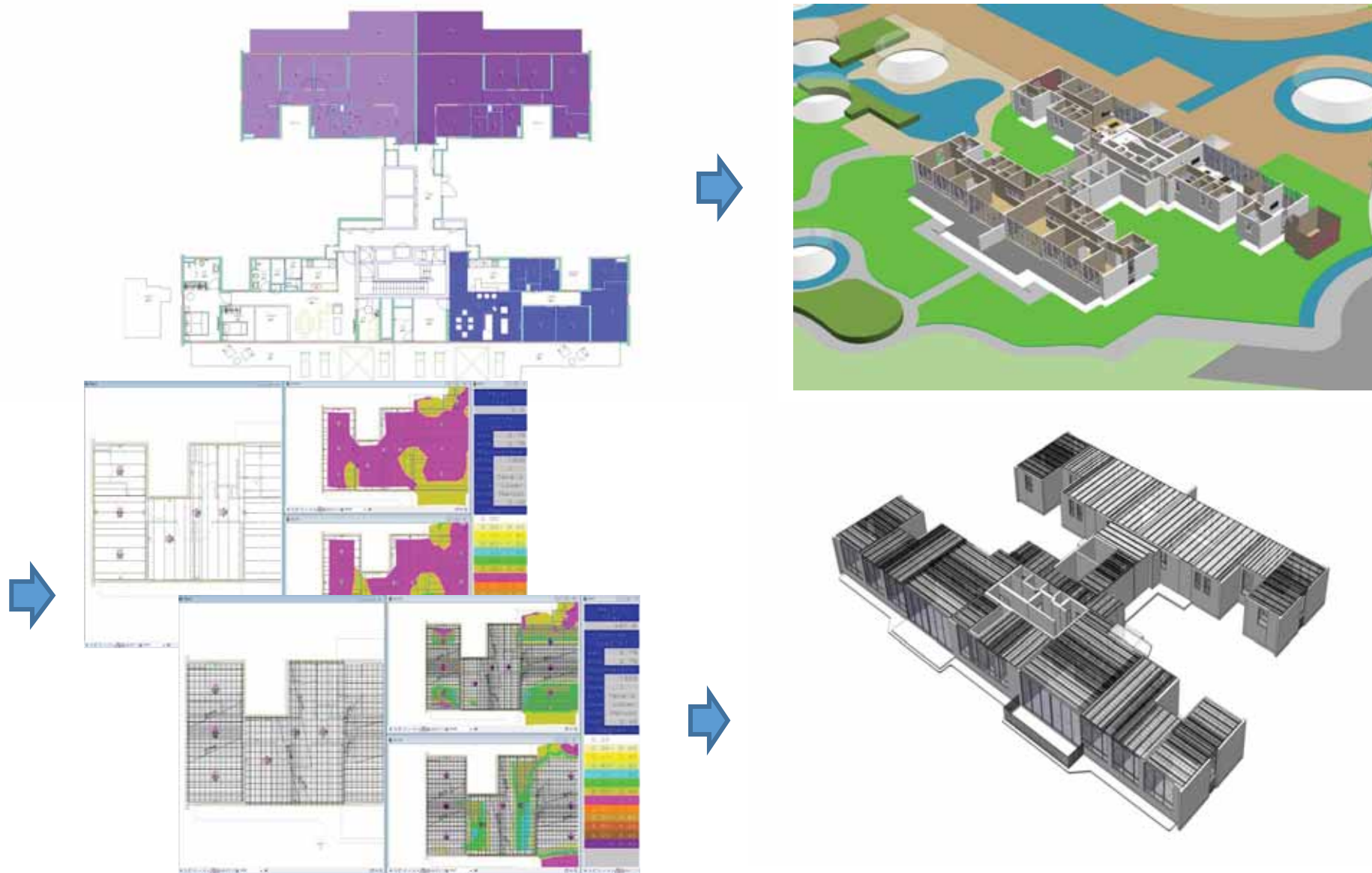
Realisation



Design process of precast walls

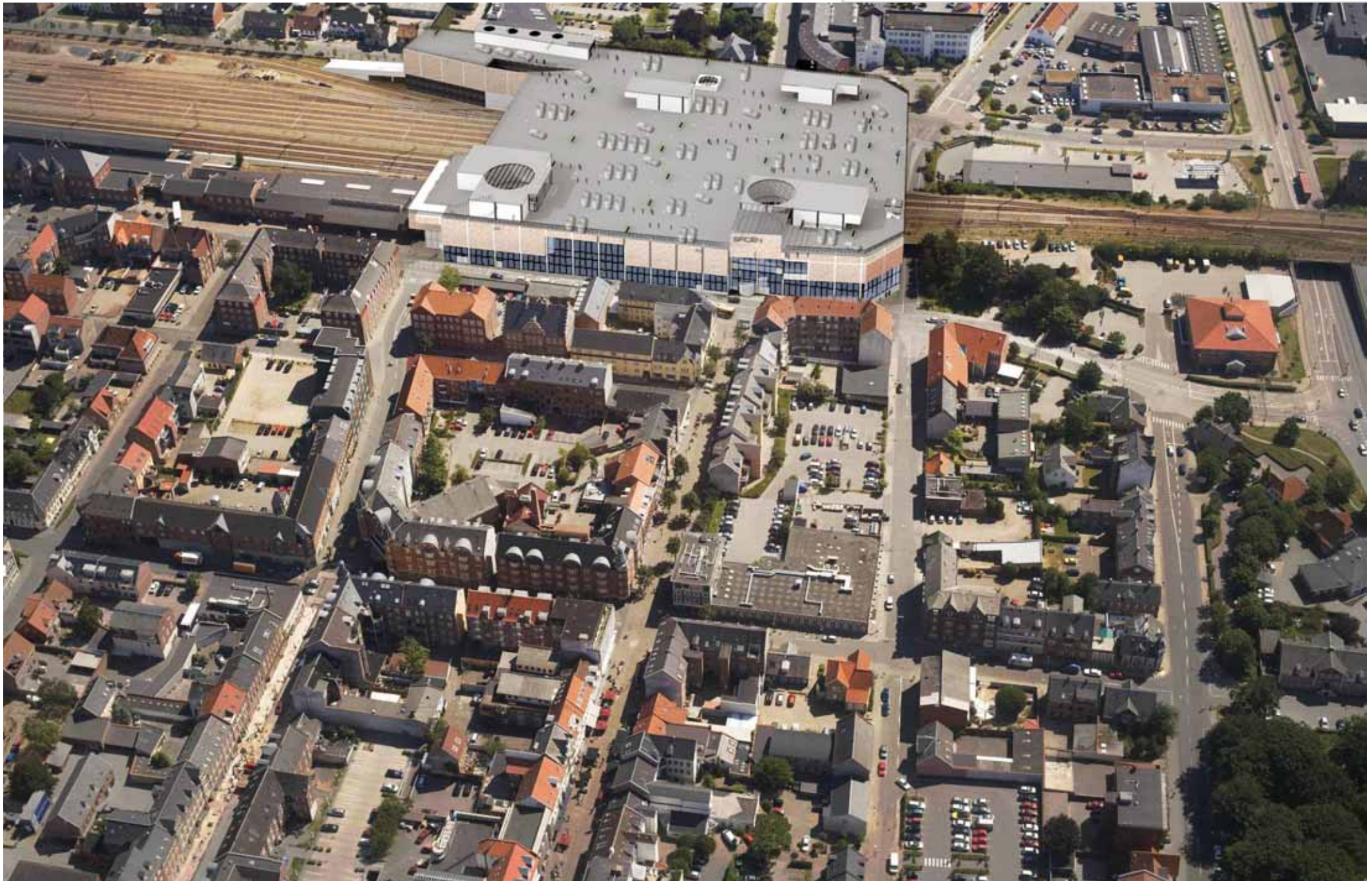


Design process of precast slabs

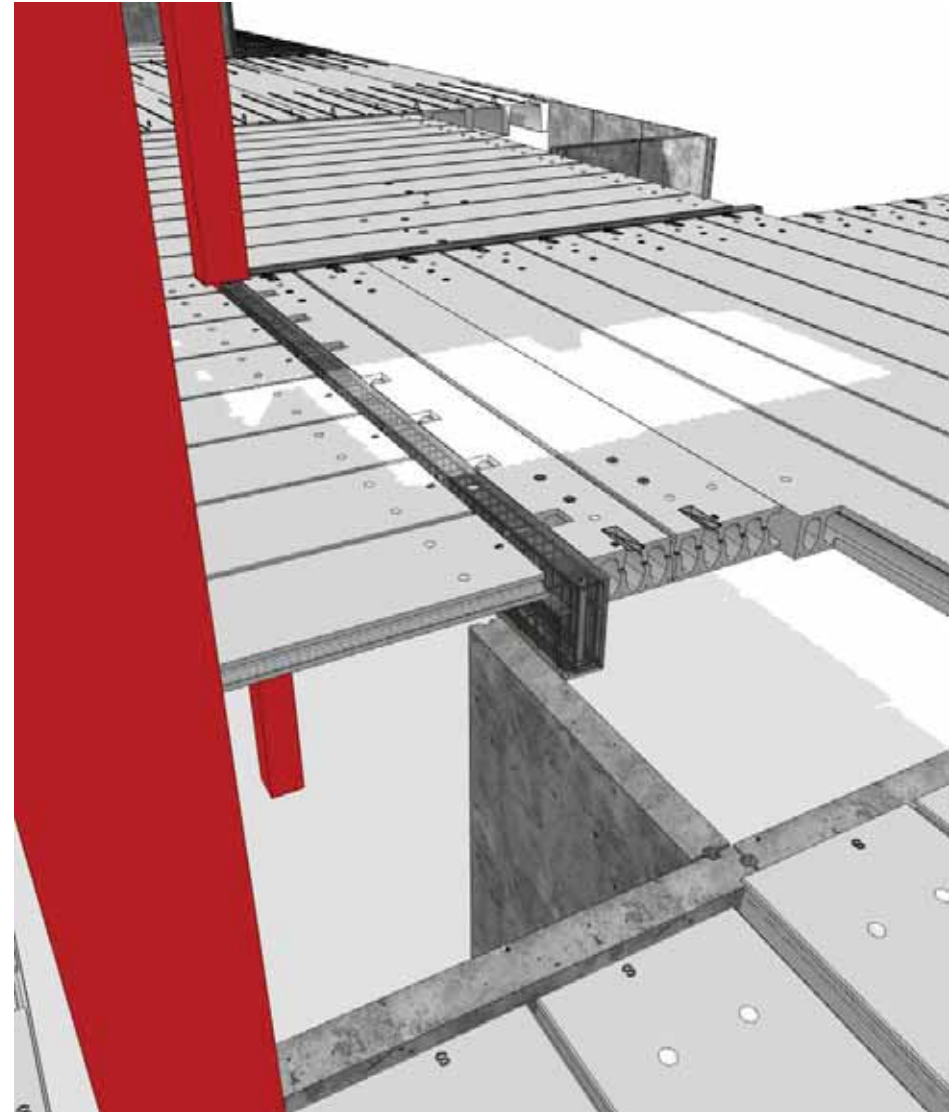
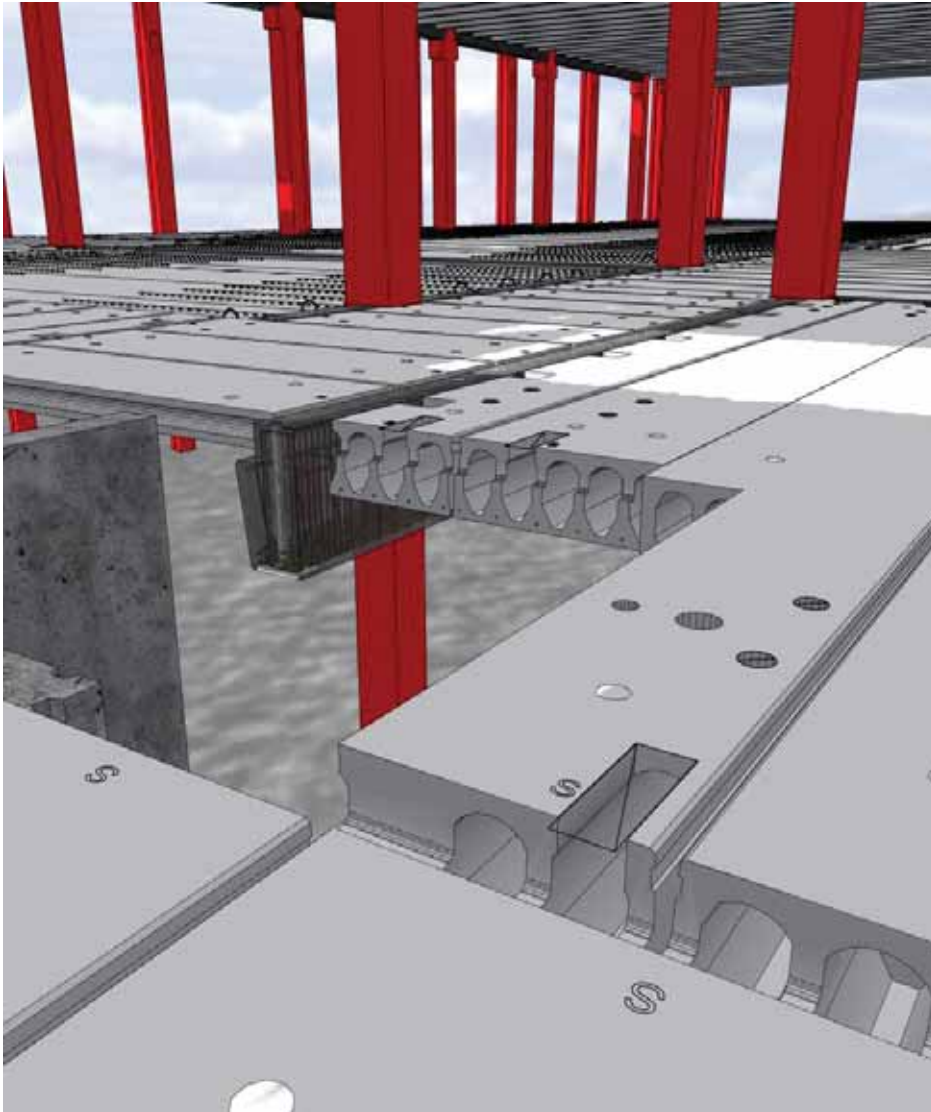




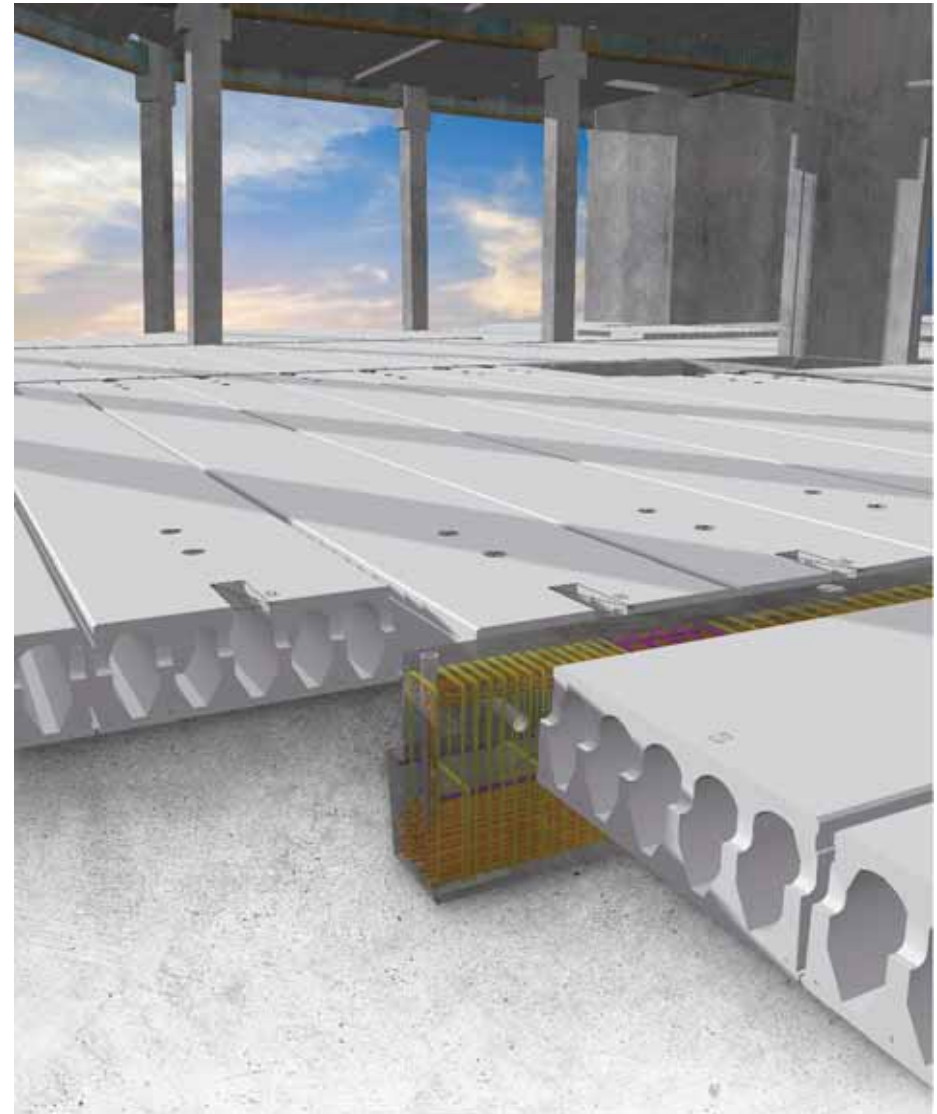
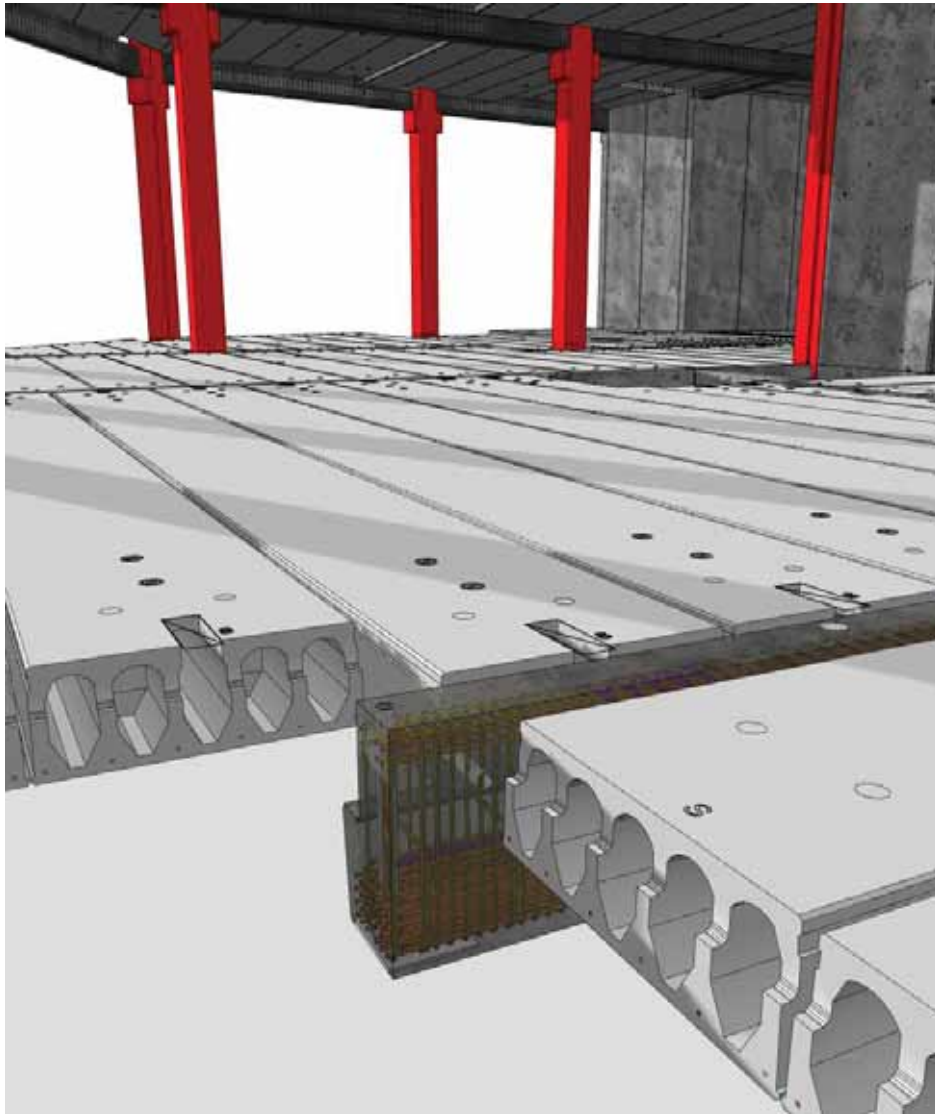
Contiga Tinglev – City Center Broen



Contiga Tinglev – City Center Broen

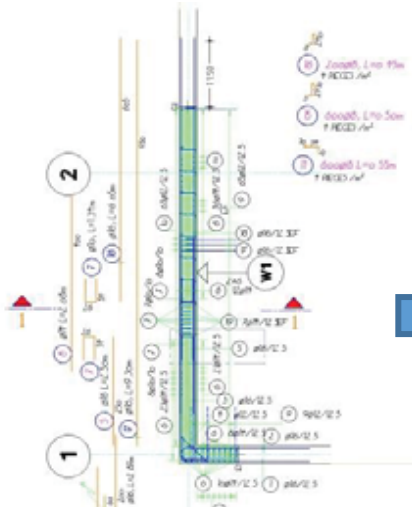


Contiga Tinglev – City Center Broen

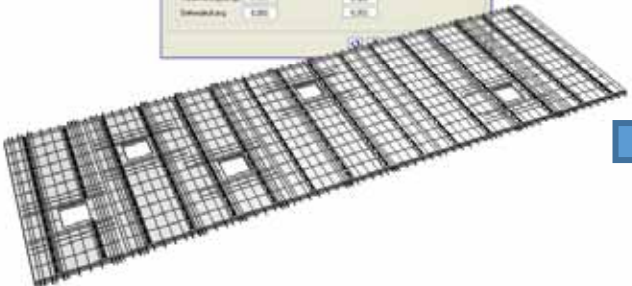


Data for production

Part	Bar length	#	Height	Bending hook length	Total bar length	Total weight
1	3.0	8	0.16		24.00	228.00
2	3.0	8	0.16		24.00	228.00
3	3.0	8	0.16		24.00	228.00
4	3.0	8	0.16		24.00	228.00
5	3.0	8	0.16		24.00	228.00
6	3.0	8	0.16		24.00	228.00
7	3.0	8	0.16		24.00	228.00
8	3.0	8	0.16		24.00	228.00
9	3.0	8	0.16		24.00	228.00
10	3.0	8	0.16		24.00	228.00
11	3.0	8	0.16		24.00	228.00
12	3.0	8	0.16		24.00	228.00
13	3.0	8	0.16		24.00	228.00
14	3.0	8	0.16		24.00	228.00
15	3.0	8	0.16		24.00	228.00
16	3.0	8	0.16		24.00	228.00
17	3.0	8	0.16		24.00	228.00
18	3.0	8	0.16		24.00	228.00
19	3.0	8	0.16		24.00	228.00
20	3.0	8	0.16		24.00	228.00



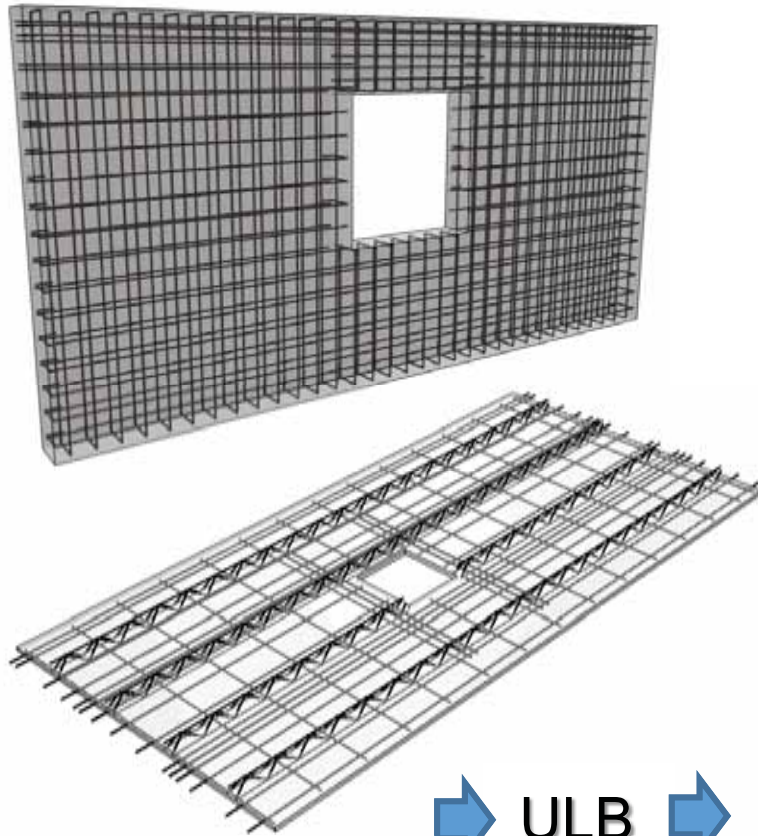
➔ BVBS ➔



➔ MSA ➔



Data for production



➔ ULB ➔





Technical Information Manager

Click & Know!

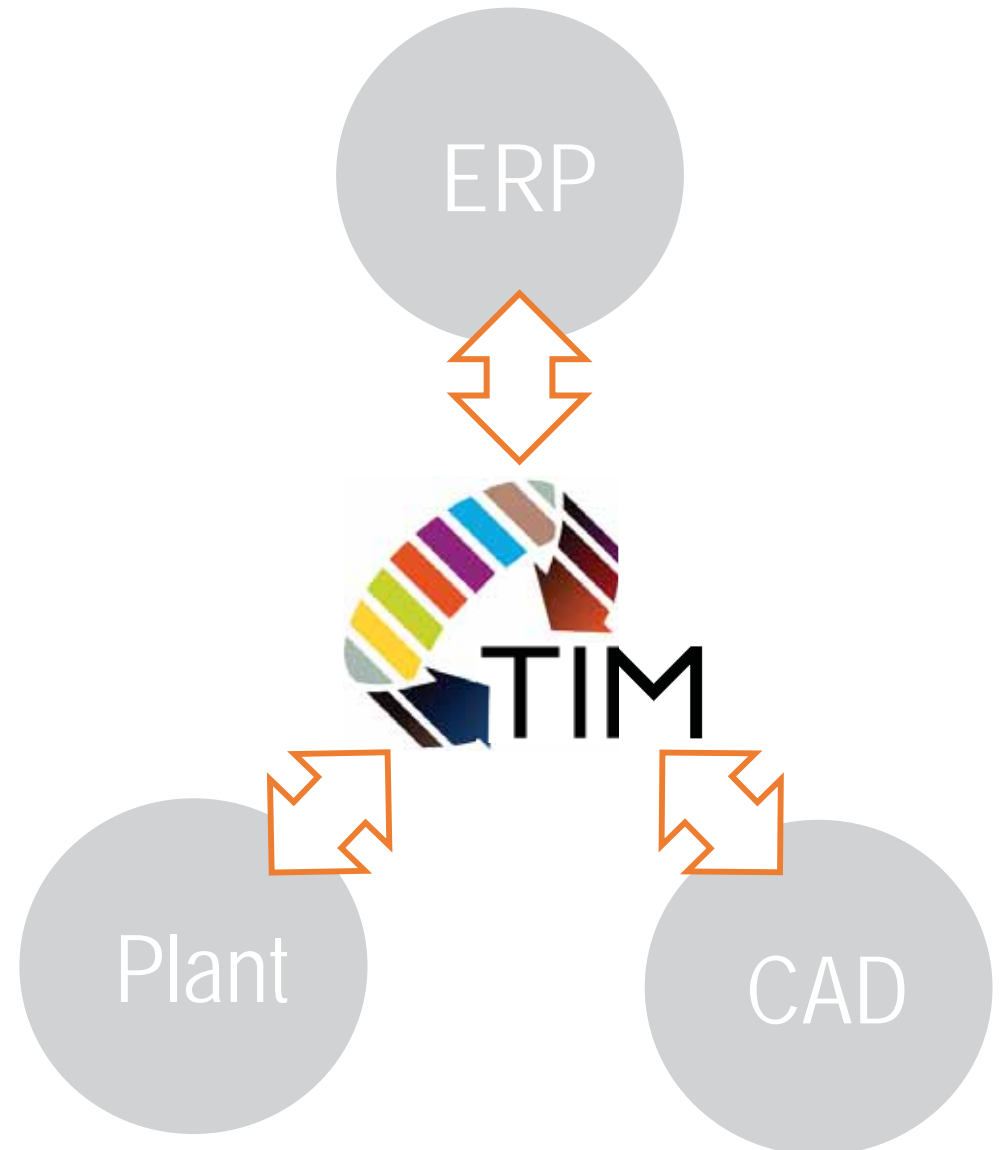
Objectives

- Access for "non-CAD users" to results of planning
building model, precast parts, status, shop drawings, lists/reports, ...
- Solution for "non-CAD users" for tasks that can be done graphically better and easier
assembling/delivery/production sequences, transport units, table/pallet/bed allocations, ...
- Data communication with partner systems
production data, article data, IFC-files, web-service interface, ...



• TIM

- *Technical Information Manager*
- applications for work preparation
- interfaces to master computers, machines and ERP-systems
- data for precast parts in CAD-quality in a SQL-database



Modules & Functionality

Import Manager

import data files from CAD, merge changes

Technical Information Manager

viewer & status

Assembler

assembling/delivery/production sequences

Delivery Manager

transport units, graphical stacking report

Production Manager

tables, pallets, beds, allocation plan

Reports & Data Export

lists & reports, workshop drawings, production data, article data, IFC files

Integration Interface

web service interface, data & status communication

