



IPHA Technical Seminar 2015

October 21-22

Malmö - Sweden



**HOLLOWCORE DESIGN
&
BIM**



IPHA Technical Seminar 2015

October 21-22, Malmö - Sweden

Opening



Seamus McKeague

IPHA



INTERNATIONAL PRESTRESSED
HOLLOWCORE ASSOCIATION

in cooperation with



IPHA Technical Seminar 2015

October 21-22, Malmö - Sweden

Welcome to Malmö



Paul Rehn

StruSoft

IPHA
INTERNATIONAL PRESTRESSED
HOLLOWCORE ASSOCIATION

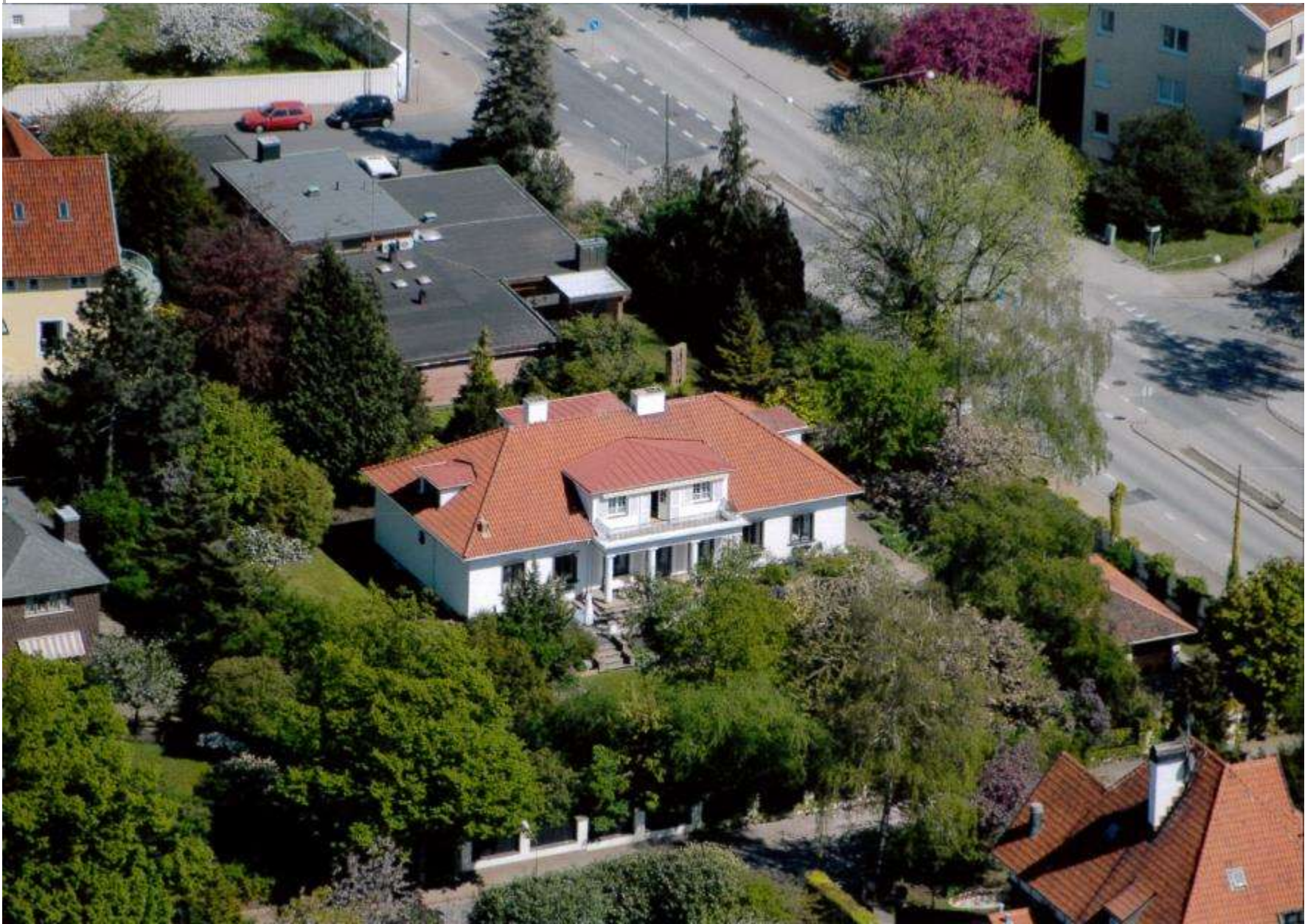
in cooperation with
StruSoft



Welcome to Malmö

Paul Rehn

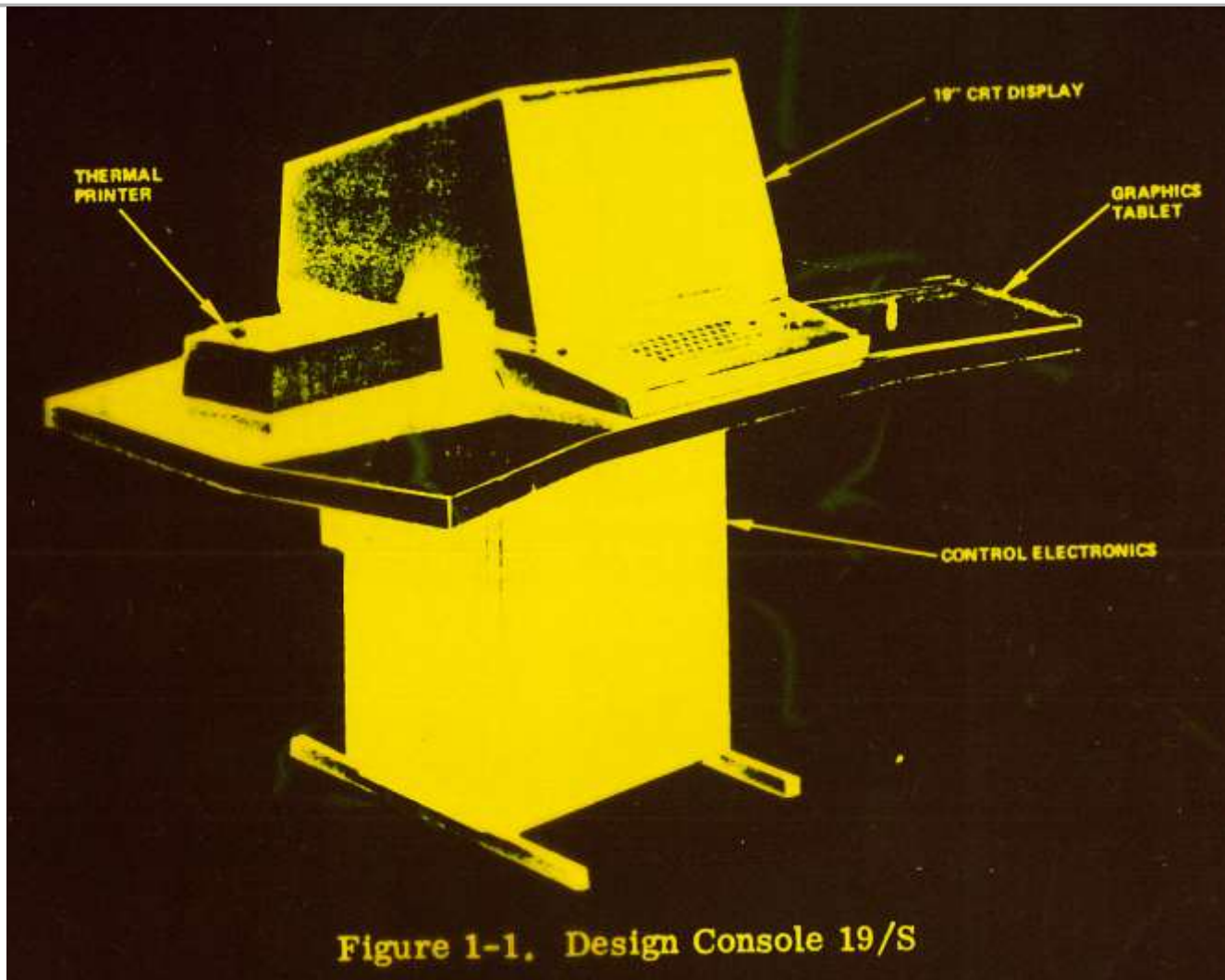










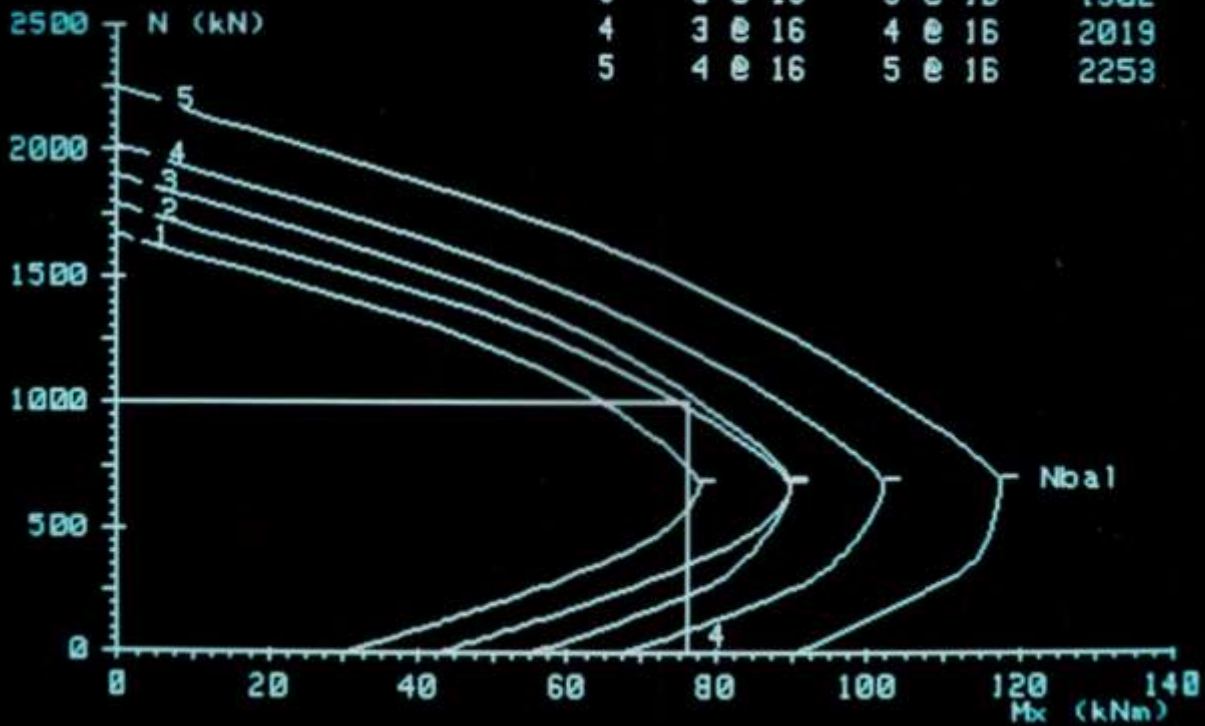


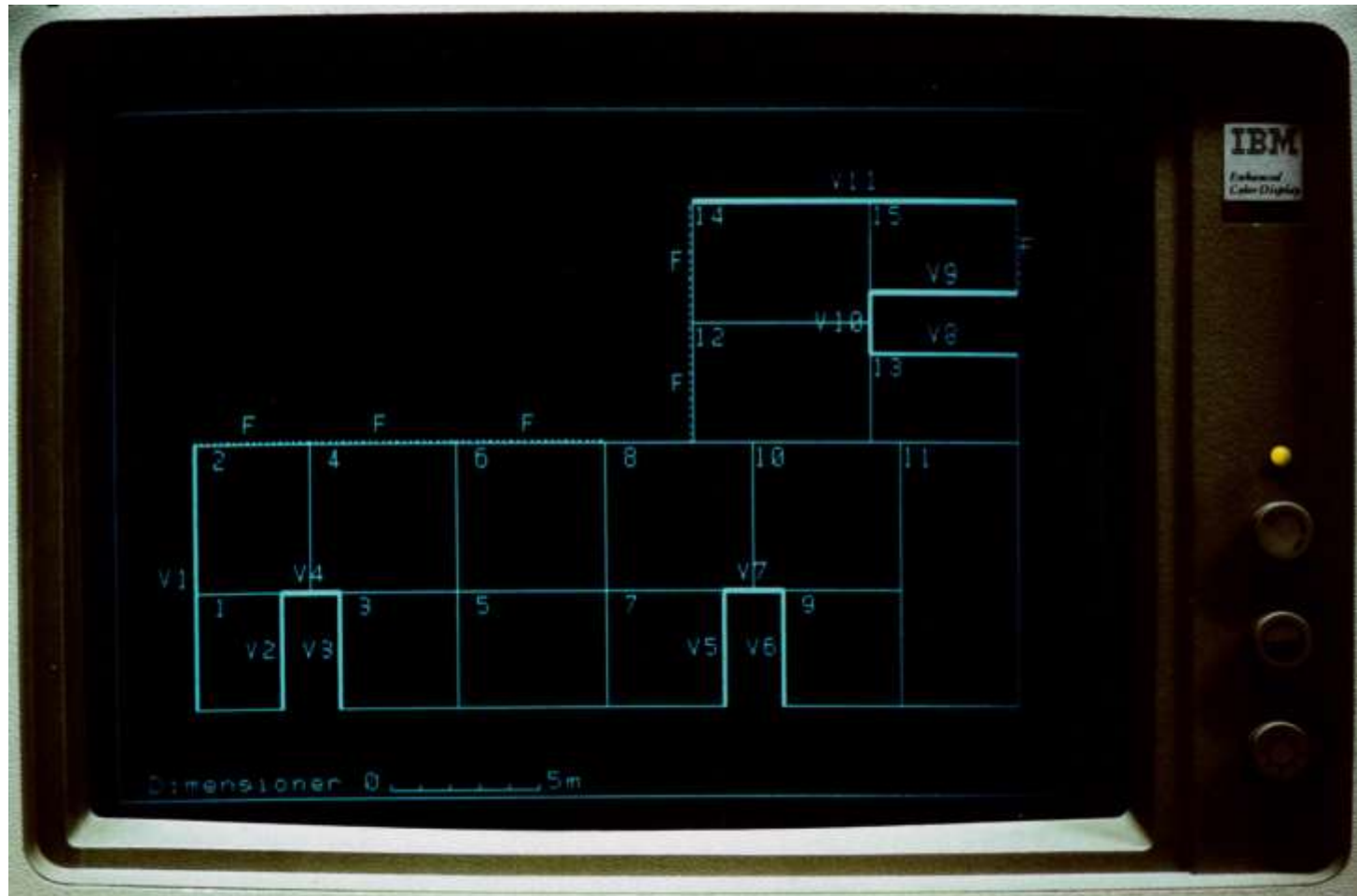
fcc.....11.9 MPa
 fst..... 303 MPa
 fsc..... 303 MPa
 fst (Ø)16) 288 MPa
 fsc (Ø)16) 288 MPa



TÄCKSKIKT = 40 mm
 ARMERINGSGRUPPER

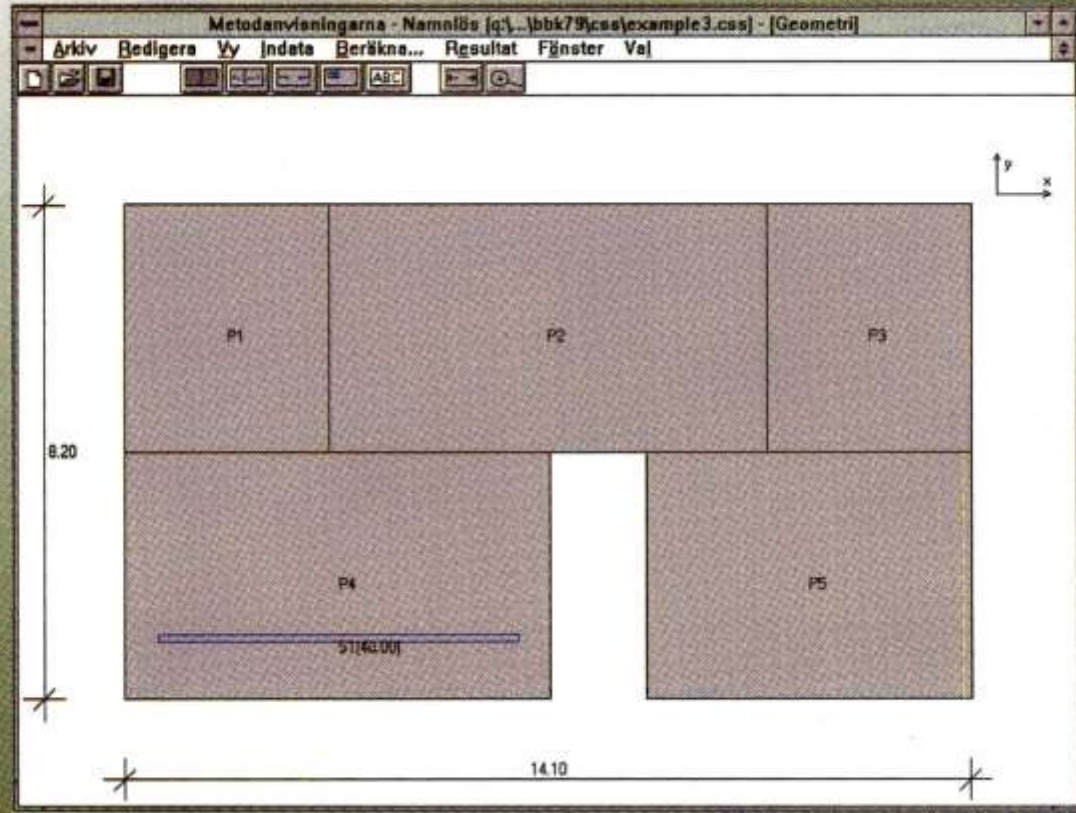
Nr	H-SIDA	B-SIDA	Nuz (kN)
1	2 @ 16	2 @ 16	1667
2	2 @ 16	3 @ 16	1784
3	3 @ 16	3 @ 16	1902
4	3 @ 16	4 @ 16	2019
5	4 @ 16	5 @ 16	2253





Skanska Software

METODANVISNINGARNA



PROGRAMUTVECKLING





Enjoy the Conference

IPHA Technical Seminar 2015

October 21-22, Malmö - Sweden

Introduction to TS 2015



Wim Jansze

IPHA



INTERNATIONAL PRESTRESSED
HOLLOWCORE ASSOCIATION

in cooperation with



WEDNESDAY, October 21 „BIM“

13:15	Architect's view on BIM	Thomas Graabæk	BIM Equity
14:00	Contractor's view on BIM: MalmoLive	Carl Jonsson	Skanska
15:00	Coffee Break		
15:30	Developers view in white paper session	Wim Jansze	IPHA
15:35	- i-Theses' view on BIM	Wouter Veelaert	i-Theses
16:00	- Nemetschek Engineering's view on BIM	Susanne Schachinger	Nemetschek Engineering
16:25	- StruSoft's view on BIM	Peter Karlsson	StruSoft
16:50	- Tekla's view on BIM	Tero Kautto	Tekla
17:15	Closing discussion „BIM“	Paul Rehn	StruSoft
17:30	MalmoLive building visit (optional)	Carl Jonsson	Skanska

19:00	Cocktail		
20:00	Dinner		

THURSDAY, October 22 „Design“

08:30	Slim floor construction with hollowcore	Fredrik Lagerström	StruSoft
09:15	Skew-cut hollowcore slabs	Jesper Frøbert Jensen	Alectia
10:00	CE-marking	Stef Maas	FEBE
10:30	Coffee Break		
11:00	Shear of hollowcore slabs with topping	Ronald Klein-Holte	VBI
11:45	Seismic performance of hollowcore	Gabriel Tarța	CES Romania
12:30	Lunch		
13:30	Project Holcofire update	Wim Jansze	On behalf of BIBM
14:00	<i>fib</i> recommendations update	Stef Maas	On behalf of <i>fib</i> C6
14:30	EN 1168 new revision update	Ronald Klein-Holte	On behalf of CEN TC229
15:00	Closing discussion „Design“	Wim Jansze	IPHA
15:15	Closure of the seminar	Wim Jansze	IPHA